



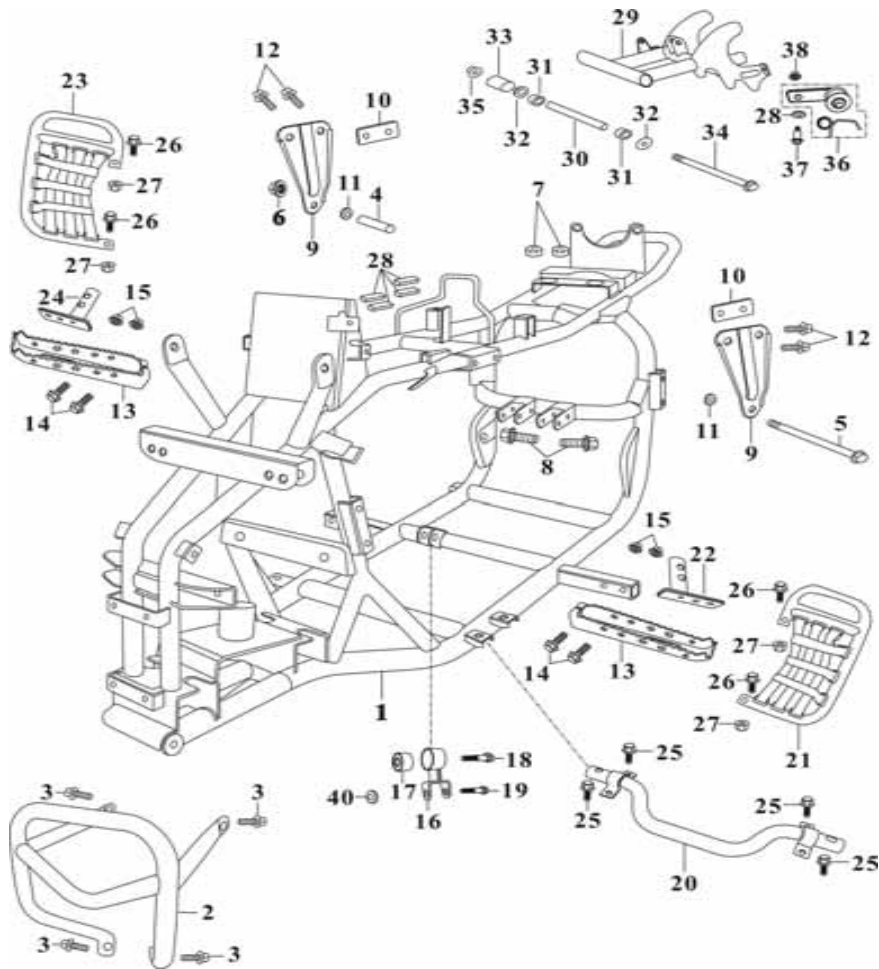
UNISON

ILLUSTRATED PARTS LIST

DESERT CAT 150 & BLACK WIDOW 150

MODELS 2004 AND UP (VER.A)

150cc SERIES

F1**FRAME BODY****DC150**

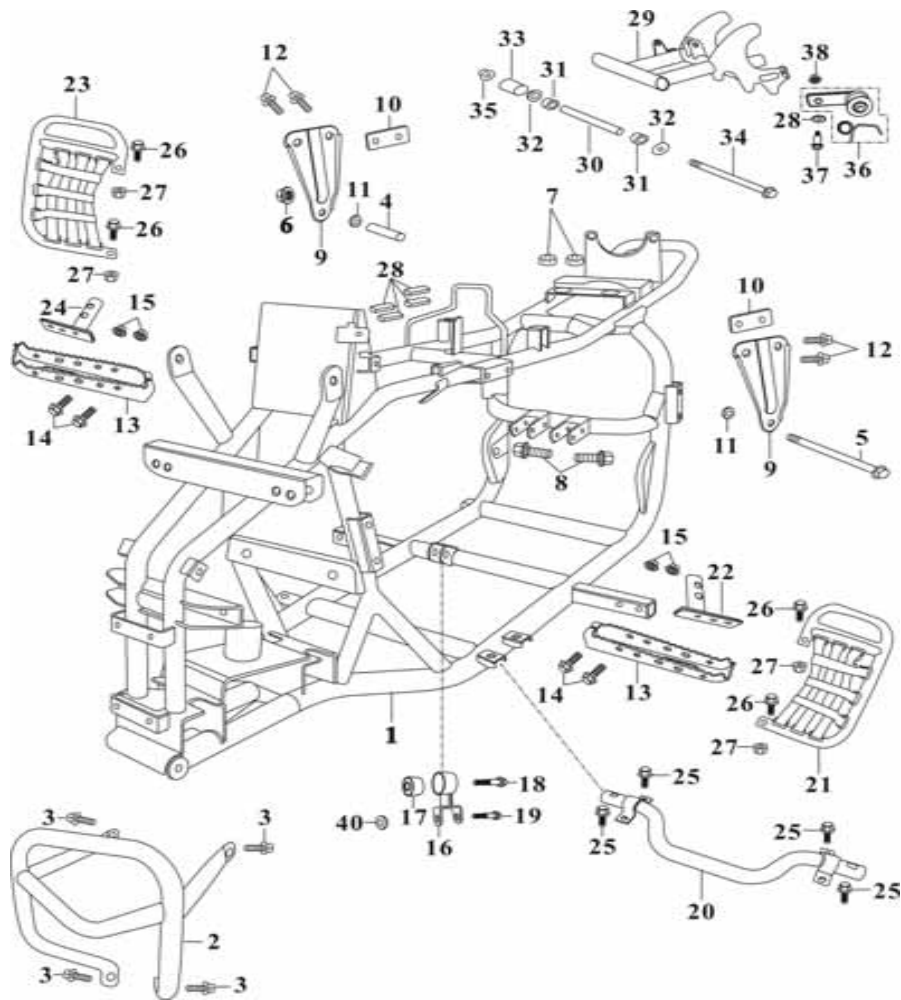
ITEM	UNISON NO.	PARTS NO.	DESCRIPTION	QTY
1	14011501	A7A-51110-00-00	FRAME COMP.	1
2	14011502	A7A-52151-00-00	FRONT FENDER ROD	1
3	14000016	95800-08014-02	FLANGE BOLT 8X14	14
4	14000033	A4A-58644-00-00	CORE TUBE 15X10X124	1
5	14000034	A4A-53511-00-00	FLANGE BOLT 10X198	1
6	17000001	94061-10000-03	FLANGE U NUT 10MM	11
7	14000024	A1A-52146-00-00	RUBBER	2
8	14000006	95701-08036-02	HEX. FLANGE BOLT 8X36	4
9	14011503	A7A-52142-00-00	E/G HANGER BRKT,1	2
10	14011504	A7A-52157-00-00	DAMPER,2	2
11	14000025	A7A-52158-00-00	DAMPER,3	2
12	14000010	95800-08020-02	FLANGE BOLT 8X20	4
13	14011508	A7A-59510-00-00	SAWTOOTH PEDAL	2
14	14000026	95701-08050-03	FLANGE BOLT 8X50	4
15	14000020	94051-08000-03	FLANGE NUT 8MM	6
16	14011510	A7A-52172-00-00	LOWER E/G. STAY	1
17	14000020	94051-08000-03	FLANGE NUT 8MM	6

**UNISON MOTORS**

F1

FRAME BODY

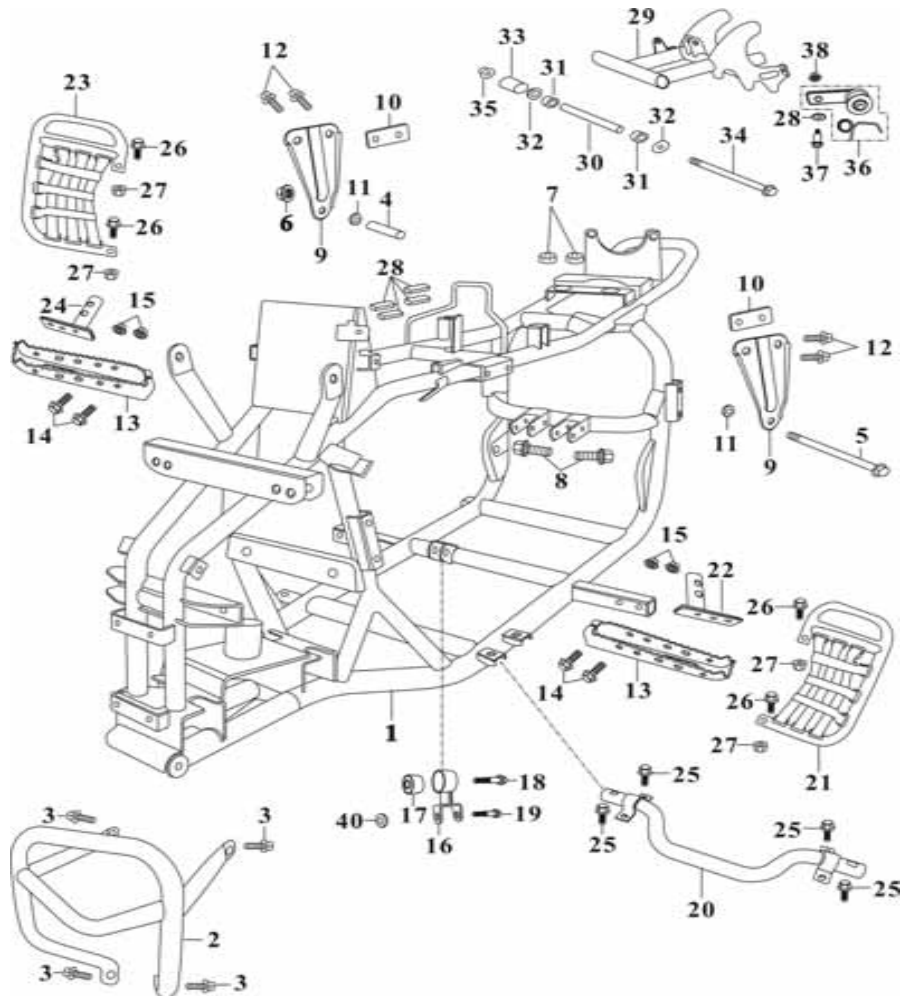
DC150



ITEM	UNISON NO.	PARTS NO.	DESCRIPTION	QTY
18	14000036	95800-10040-03	FLANGE BOLT 10X40	4
19	14000037	95800-08040-02	FLANGE BOLT 8X40	1
20	14011511	A7A-59507-00-00	NERF BAR CONNECTING ROD	1
21	14011512	A7A-59550-10-01	NERF BAR ASSY.1,RED	1
22	14000038	A7A-59552-00-00	NERF BAR BRACKET 1	1
23	14011513	A7A-59560-10-01	NERF BAR ASSY. 2, RED	1
24	14000039	A7A-59562-00-00	NERF BAR BRACKET 2	1
25	14000019	95800-08016-02	FLANGE BOLT 8X16	8
26	25000024	95801-10048-02	FLANGE BOLT 10X48	4
27	17000001	94061-10000-03	FLANGE U NUT 10MM	8
28	14000023	A1A-52156-00-00	DAMPER,1	8
29	14011515	A7A-58110-00-10	REAR FORK COMP	1
30	14000007	A1A-58151-00-00	REAR FORK SPACER SLEEVE	1
31	14000005	A1A-58155-00-00	BUSHING CONTAIN OIL	2
32	14000004	A1A-58165-00-00	REAR FORK SEAL COVER	2
33	14000003	A1A-58175-00-00	RUBBER SLEEVE	1
34	14000008	A1A-58161-00-00	REAR FORK SET BOLT	1

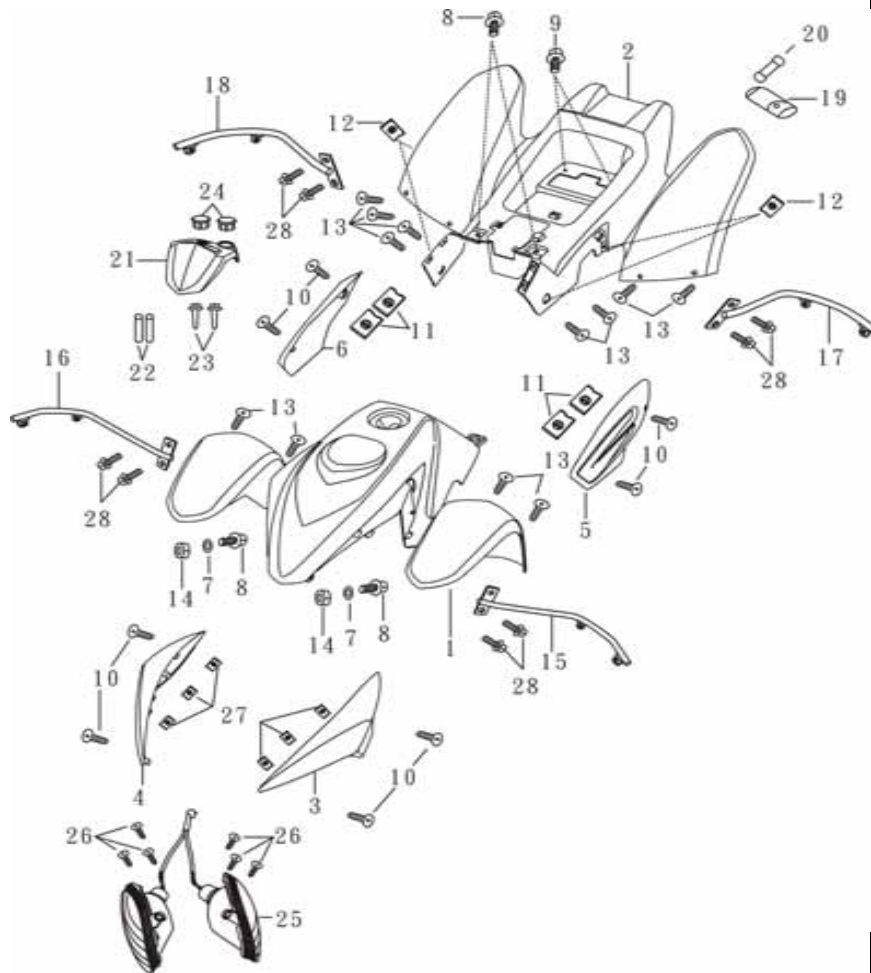


UNISON MOTORS

F1**FRAME BODY****DC150**

ITEM	UNISON NO.	PARTS NO.	DESCRIPTION	QTY
35	12000001	94061-14000-01	FLANGE U NUT 14MM	2
36	22000003	A1A-26970-00-00	CHAIN TENSIONER ASSY.	1
37	14011517	A7A-26973-00-00	CHAIN TENSIONER BOLT	1
38	14000035	94050-08000-03	FLANGE NUT 8MM	4
39	14011518	A7A-53257-00-00	WASHER	1
40	14000035	94050-08000-03	FLANGE NUT 8MM	4



F2**SIDE COVER****DC150**

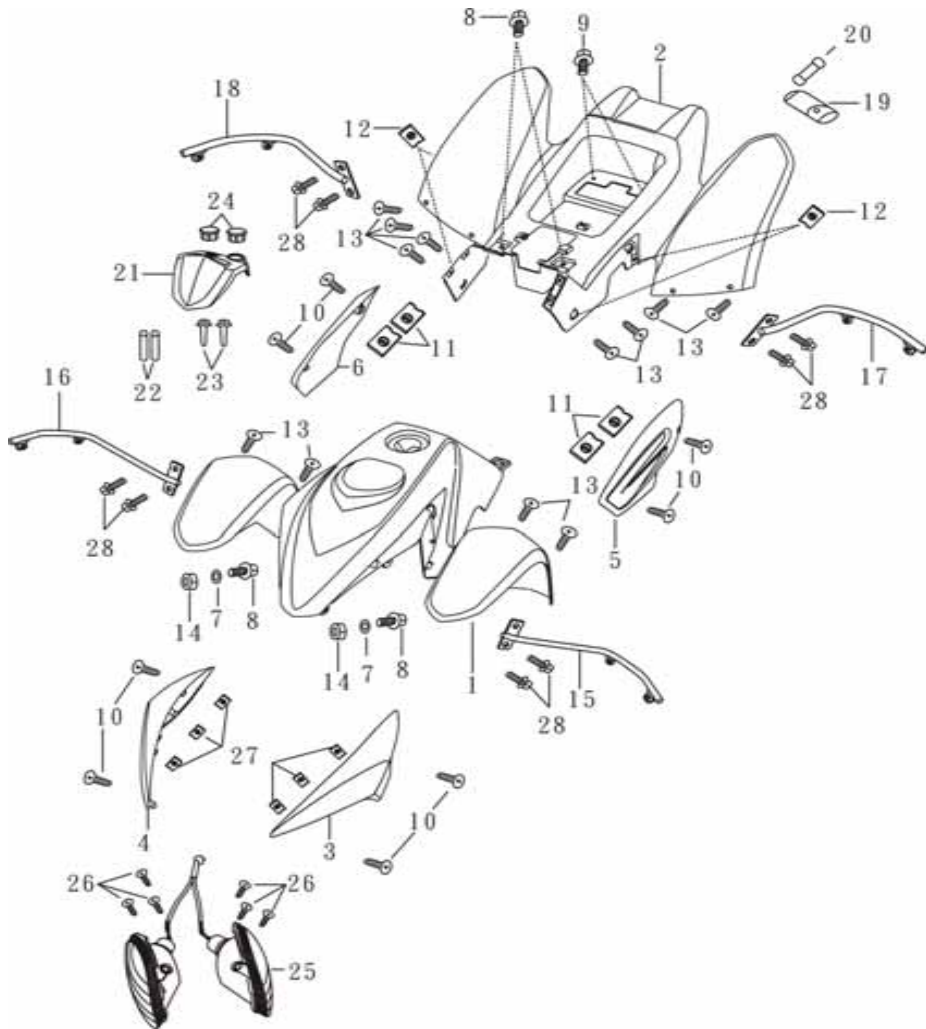
ITEM	UNISON NO.	PARTS NO.	DESCRIPTION	QTY
1	15011501	A1A-73511-00-00	FRONT COVER	1
2	15011502	A1A-73521-00-00	SIDE COVER	1
3	15011503	A1A-73531-00-00	SIDE COVER,1 L	1
4	15011504	A1A-73541-00-00	SIDE COVER,2 R	1
5	15000051	A1A-73551-00-00	SIDE COVER,3	1
6	15000061	A1A-73561-00-00	SIDE COVER,4	1
7	09000002	94101-06193-00	PLATE WASHER 6MM	4
8	15000008	93404-06020-03	BOLT W/ WASHER 6X20	6
9	15000013	93404-06016-03	BOLT W/WASHER 6X16	6
10	15011508	93900-05012-02	TAPPING SCREW 5X12	8
11	15000007	A1A-73518-00-00	CLIP NUT 6MM	16
12	15000016	A1A-73519-00-00	CLIP NUT 5MM	4
13	15000006	93530-06018-02	PAN HEAD SCREW 6X18	20
14	15000014	94051-06000-01	FLANGE U NUT 6MM	14
15	15011509	A7A-52121-00-00	FRONT COVER STAY 1	1



F2

SIDE COVER

DC150



ITEM	UNISON NO.	PARTS NO.	DESCRIPTION	QTY
16	15011510	A7A-52122-00-00	FRONT COVER STAY 2	1
17	15011519	A7A-52123-00-00	REAR COVER STAY 1 (DC 150CC)	1
18	15011520	A7A-52124-00-00	REAR COVER STAY 2 (DC 150CC)	1
19	15011511	A4A-81110-00-01	TOOL KIT	1
20	27000017	A1A-81113-00-00	RUBBER	1
21	15000071	A1A-72311-00-00	HANDLE COVER	1
22	15000009	A1A-72325-00-00	COLLAR	2
23	15000010	95800-06045-02	FLANGE BOLT 6X45	4
24	15000001	A1A-72315-00-00	HOLE PLUG	2
25	15000017	A1A-35300-00-00	WINKER ASSY.	1
26	15000018	93900-04012-02	TAPPING SCREW 4X12	6
27	15000019	A1A-73537-00-00	CLIP NUT 4MM	6
28	14000016	95800-08014-02	FLANGE BOLT 8X14	14
	15011581	N/A	DC 150 DECAL SET GREY & BLACK	
	15011582	N/A	DC 150 DECAL SET RED & GREY	
	1501159?	N/A	DC 150 PLASTIC SET, ?	

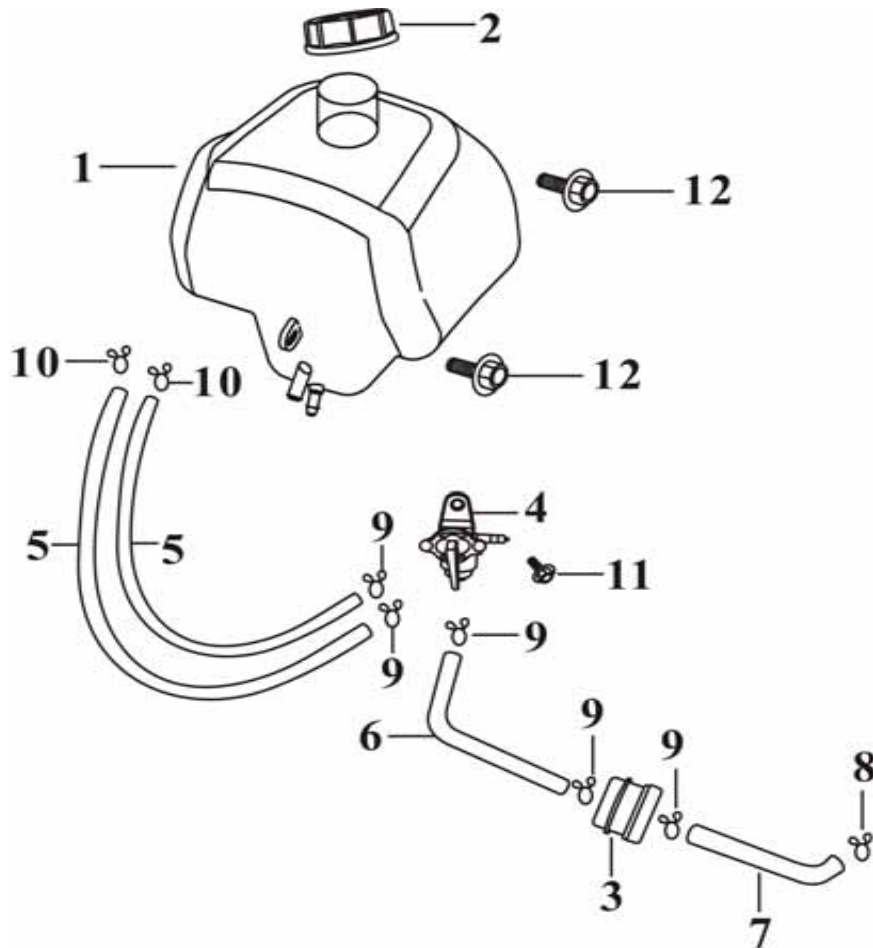
FOR THE PLASTIC SETS THERE ARE EIGHT COLORS, THE QUESTION MARK (?) NEEDS TO BE FILLED IN WITH THE CORRECT NUMBER AND COLOR, 1-RED, 2-YELLOW, 3-GREEN, 4-BLUE, 5-BLACK, 6-WHITE, 7-ORANGE, 8-GREY



F3

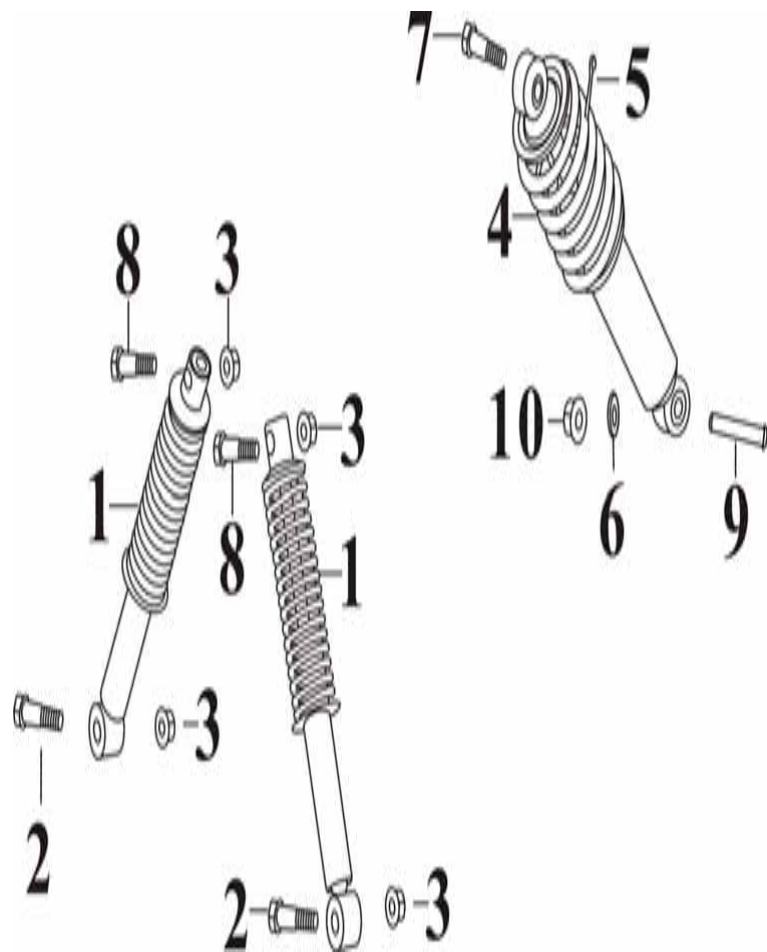
OIL TANK / FUEL TANK

DC150



ITEM	UNISON NO.	PARTS NO.	DESCRIPTION	QTY
1	16000005	A1A-62110-00-00	FUEL TANK COMP.	1
2	16000006	A1A-62211-00-00	FUEL TANK CAP	1
3	16000014	A1A-62410-00-00	FUEL FILTER ASSY	1
4	16000010	A1A-62310-00-00	FUEL COCK ASSY	1
5	16000019	A4A-62371-00-00	FUEL HOSE,1	2
6	16000020	A4A-62372-00-00	FUEL HOSE, 2	1
7	16000015	A4A-62373-00-00	FUEL HOSE, 3	1
8	16000016	94201-08085-00	CLIP	2
9	16000017	94201-12095-00	CLIP	5
10	16000018	94204-08110-00	CLIP	2
11	25000010	95800-06012-04	FLANGE BOLT 6X12	5
12	15000008	93404-06020-03	BOLT W/ WASHER 6X20	6



F4**SUSPENSION****DC150**

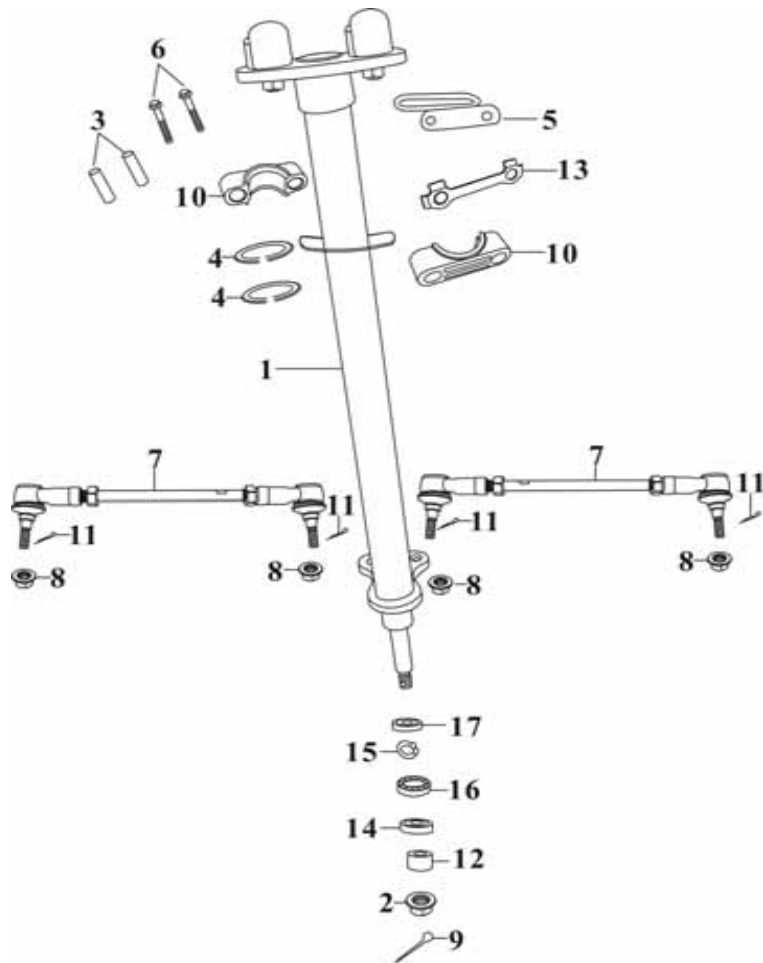
ITEM	UNISON NO.	PARTS NO.	DESCRIPTION	QTY
1	17011501	A7A-57210-70-00	FR. SHOCK ABSORBER ASSY.	2
2	17000003	95801-10054-03	FLANGE BOLT 10X54	2
3	17000001	94061-10000-03	FLANGE U NUT 10MM	11
4	17011502	A7A-58210-70-10	RR. SHOCK ABSORBER ASSY.	1
5	17011503	94521-12221-00	SPLIT PIN 1.2X22	1
6	17000004	94101-12246-20	PLATE WASHER 12MM	1
7	17000094	95827-10040-04	BOLT W/HOLE 10X40	1
8	30000006	95802-10040-03	FLANGE BOLT 10X40	4
9	17000005	95802-12078-03	FLANGE BOLT 12X78	1
10	14000012	94061-12000-03	FLANGE U NUT 12MM	1



F5

STEERING

DC150



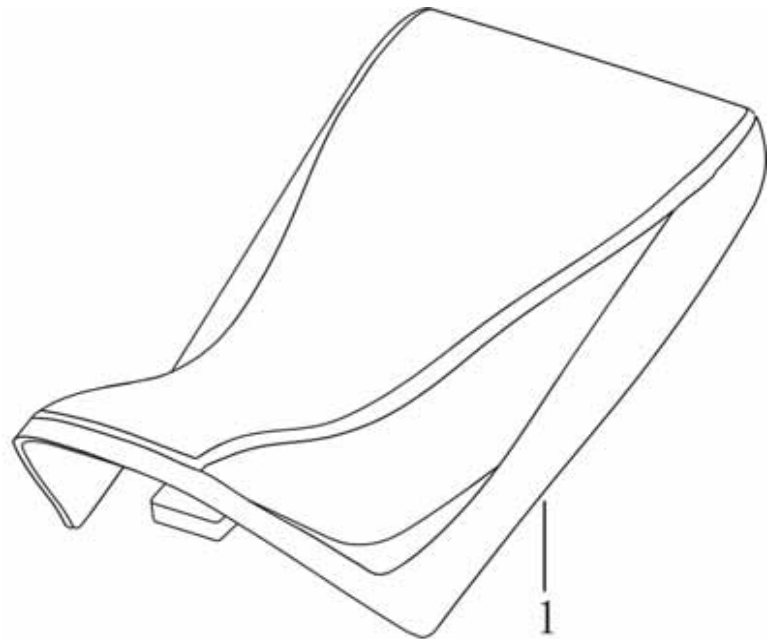
ITEM	UNISON NO.	PARTS NO.	DESCRIPTION	QTY
1	18011501	A7A-72140-00-00	SHAFT STEERING	1
2	12000001	94061-14000-01	FLANGE U NUT 14MM	2
3	18000016	A4A-72141-00-00	HOLDER COLLAR	2
4	18000017	A4A-72167-00-00	DUST SEAL	2
5	18011505	A7A-72156-00-00	BRAKE CABLE SEAT	1
6	18000018	92000-08060-01	HEX. BOLT 8X60	2
7	18011502	A7A-72143-00-00	STEERING TIE. ROD ASSY.1	2
8	17000001	94061-10000-03	FLANGE U NUT 10MM	11
9	18000019	94201-30550-03	SPLIT PIN 3.0X55	1
10	18000020	A4A-72146-00-00	HOLDER, STEERING SHAFT	2
11	18000015	94201-22305-03	SPLIT PIN 2.2X30.5	4
12	18011503	A7A-55446-00-00	COLLAR 40MM	1
13	18000021	A4A-72157-00-00	TONGUED WASHER	1
14	18000005	91201-22035-70	OIL SEAL22X35X7	4
15	18000014	94521-12320-00	C CLIP - 32MM	1
16	18000006	96123-06002-20	BEARING 6002ZZ	1
17	18000002	91201-18032-70	OIL SEAL 18X32X7	1



F6

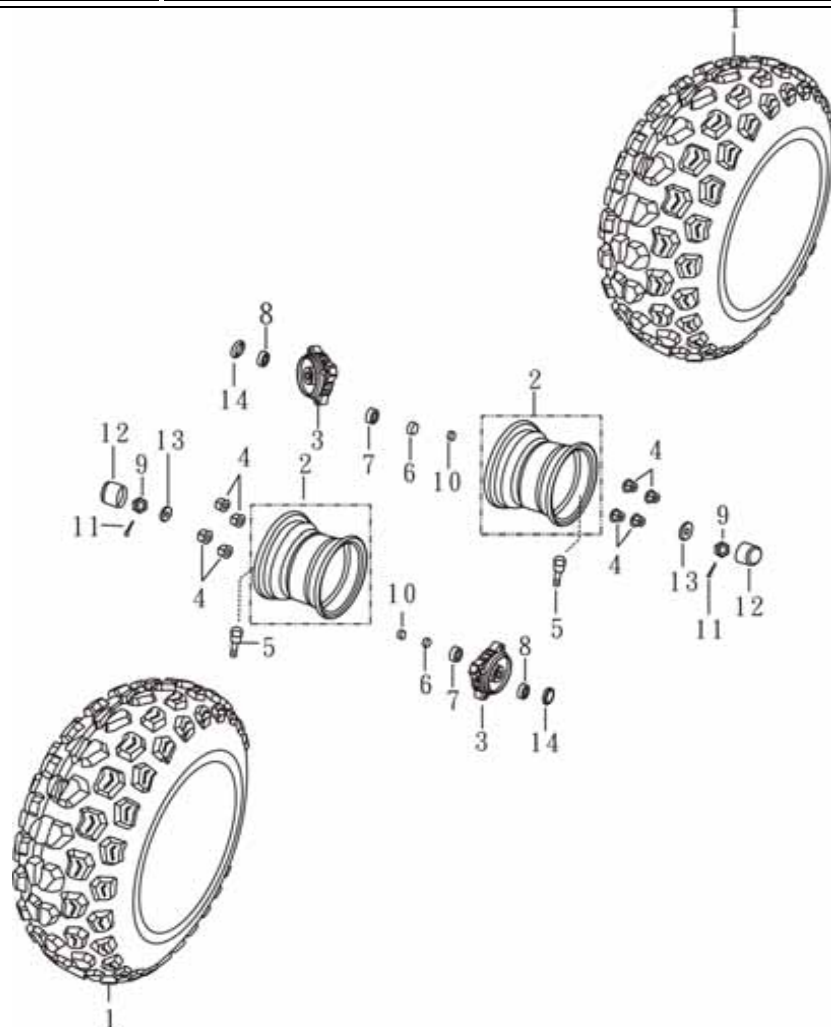
SEAT ASSY.

DC150



ITEM	UNISON NO.	PARTS NO.	DESCRIPTION	QTY
1	19011501	A1A-76111-00-00	SEAT ASSY	1
2	19000001	A1A-76162-00-00	BRACKET	1
3	19000007	93900-04012-04	TAPPING SCREW 4X12	2



F7**FRONT WHEEL****DC150**

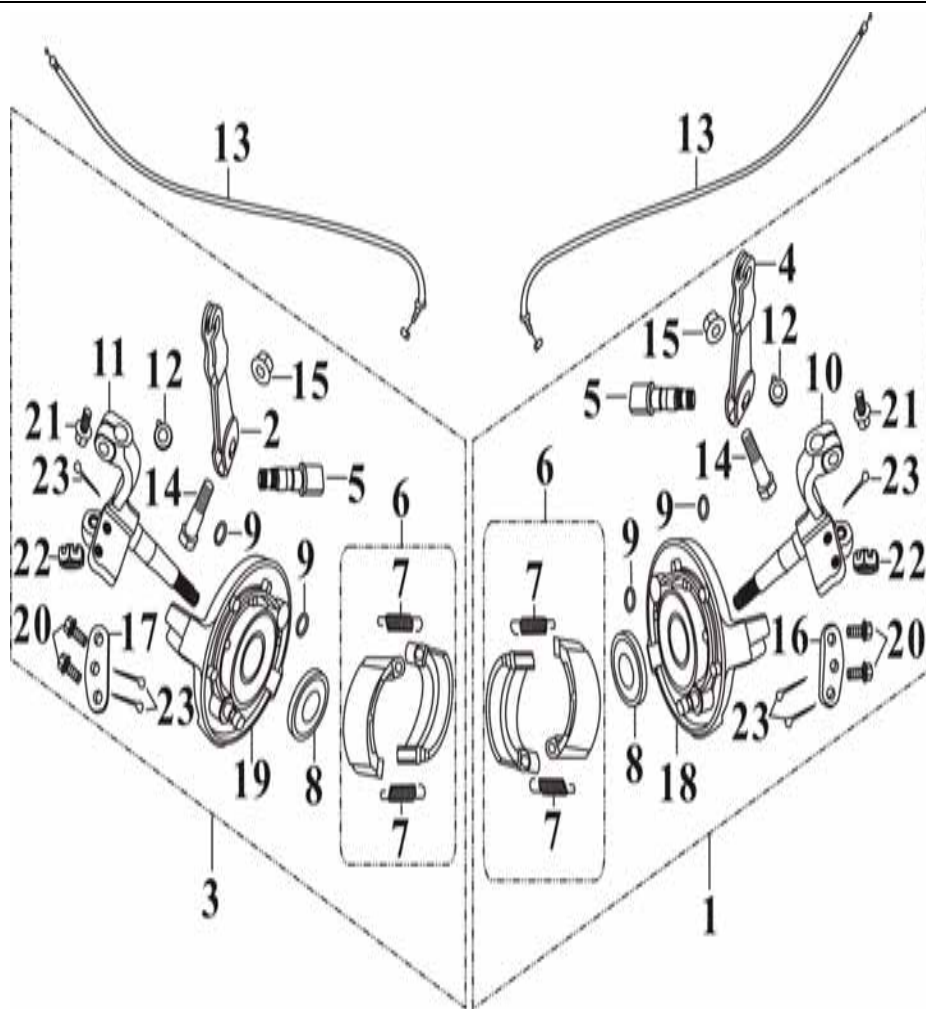
ITEM	UNISON NO.	PARTS NO.	DESCRIPTION	QTY
1	20011501	A7A-53311-00-00	TIRE K532F 20X6-10	2
2	20021502	A4A-53210-00-00	WHEEL COMP.10X5.5	2
3	20011503	A4A-55442-00-00	FRONT BRAKE DRUM	2
4	17000001	94061-10000-03	FLANGE U NUT 10MM	11
5	20000006	A1A-53322-00-00	RIM VALVE	2
6	20011504	91201-23035-70	OIL SEAL 23X35X7	2
7	20000010	96120-06003-20	BALL BEARING 6003 LU	2
8	21032515	A4A-55446-00-00	COLLAR	2
9	20000011	A4A-54266-00-00	CASTLE NUT 14MM	2
10	20032508	A4A-55456-00-00	COLLAR 23X16X8.5	2
11	20032513	94201-30430-03	SPLIT PIN 3.0X43	2
12	20000008	A1A-53268-00-00	RUBBER CAP	2
13	20011502	A1A-54526-00-00	WASHER	2
14	20000009	96120-06004-20	BALL BEARING 6004 LU	2



F8

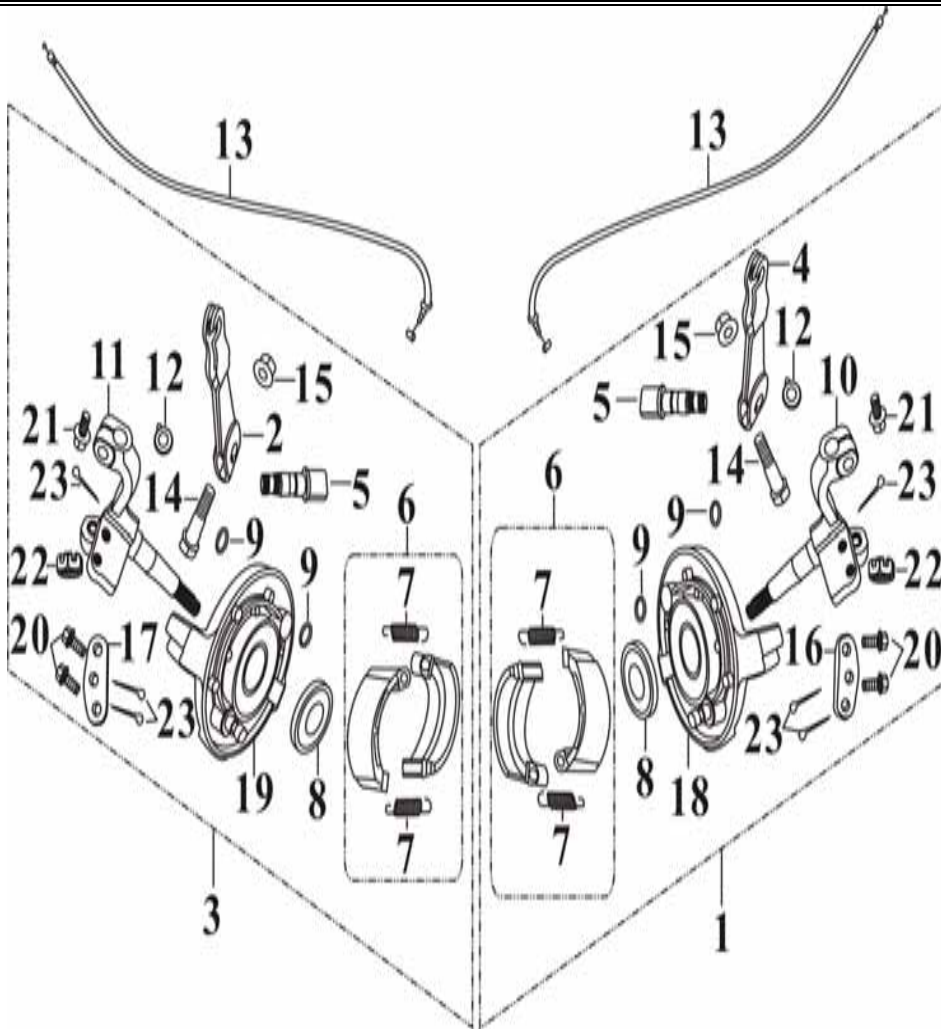
FRONT BRAKE

DC150



ITEM	UNISON NO.	PARTS NO.	DESCRIPTION	QTY
1	21011501	A4A-55440-00-00	FRONT BRAKE PANAL ASSY. L	1
2	21011504	A4A-55612-00-00	CAM SHAFT LEVER,2	1
3	21011502	A4A-55450-00-00	FRONT BRAKE PANAL ASSY,R	1
4	21000027	A4A-55611-00-00	CAM SHAFT LEVER,1	1
5	21000014	A4A-55621-00-00	CAM SHAFT,1	2
6	21000015	A4A-55420-00-00	BRAKE SHOE KIT	2
7	21000022	A4A-55461-00-00	SPRING	4
8	21000016	91201-50062-70	OIL SEAL 50X62X7	2
9	21000017	91301-20120-00	O-RING 12X2.0	4
10	21000018	A4A-72144-00-00	KNUCKLE,1	1
11	21000019	A4A-72154-00-00	KNUCKLE,2	2
12	21000020	A4A-55631-00-00	INDICATOR PLATE	2
13	21011503	A7A-68111-00-00	BRAKE CABLE,1	2
14	21000021	92201-06030-04	HEX. BOLT 6X30	2
15	15000014	94051-06000-01	FLANGE U NUT 6MM	14
16	21000012	A4A-72185-00-00	STEERING BRKT,1	1
17	21000013	A4A-72195-00-00	STEERING BRKT,2	1



F8**FRONT BRAKE****DC150**

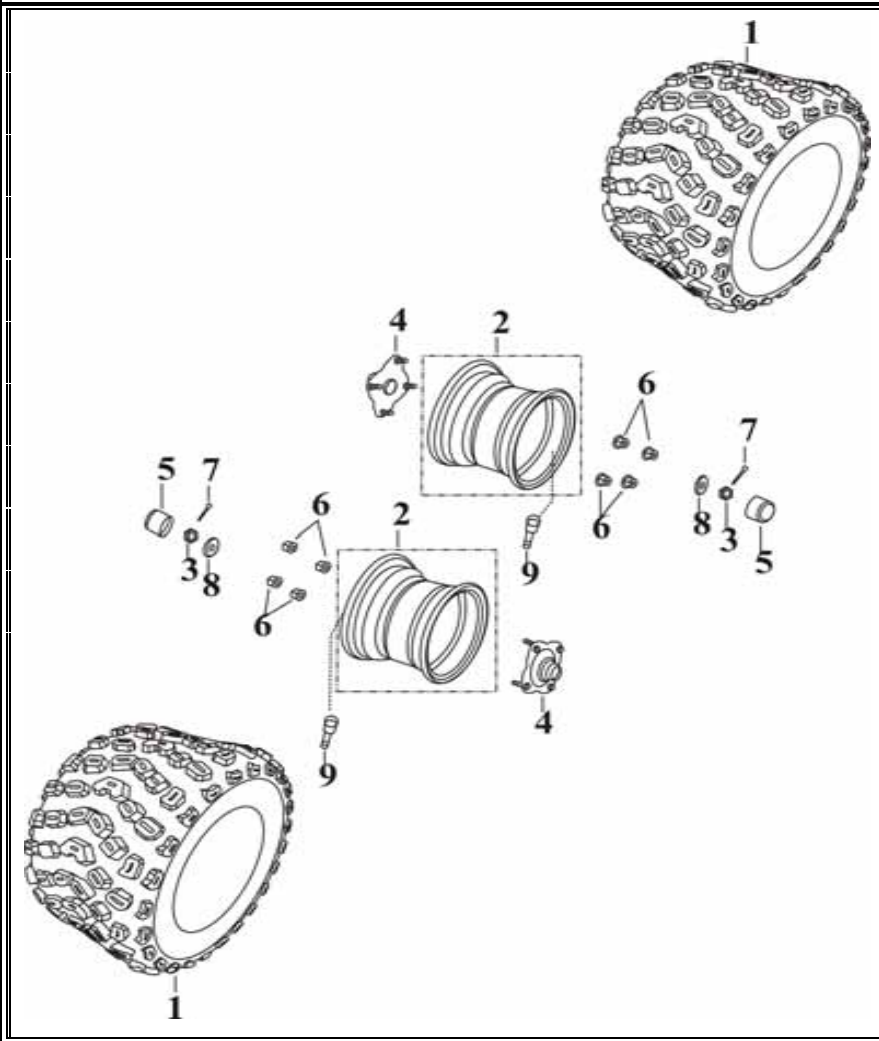
ITEM	UNISON NO.	PARTS NO.	DESCRIPTION	QTY
18	21000023	A4A-55441-00-00	FRONT BRAKE PANAL COMP,L	1
19	21000024	A4A-55451-00-00	FRONT BRAKE PANAL COMP,R	1
20	21000025	95807-10030-02	FLANGE BOLT 10X30	4
21	21000026	95800-10048-03	FLANGE BOLT 10X48	2
22	20000007	A1A-53266-00-00	CASTLE NUT 12MM	2
23	18000015	94201-22305-03	SPLIT PIN 2.2X30.5	4



F9

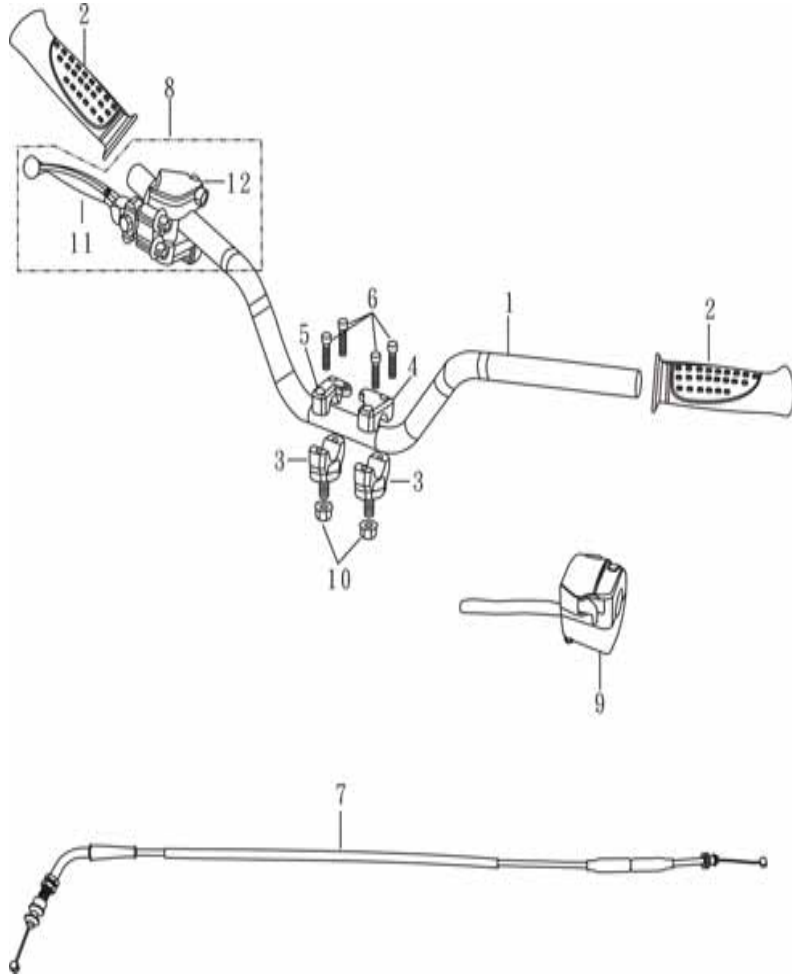
REAR WHEEL

DC150



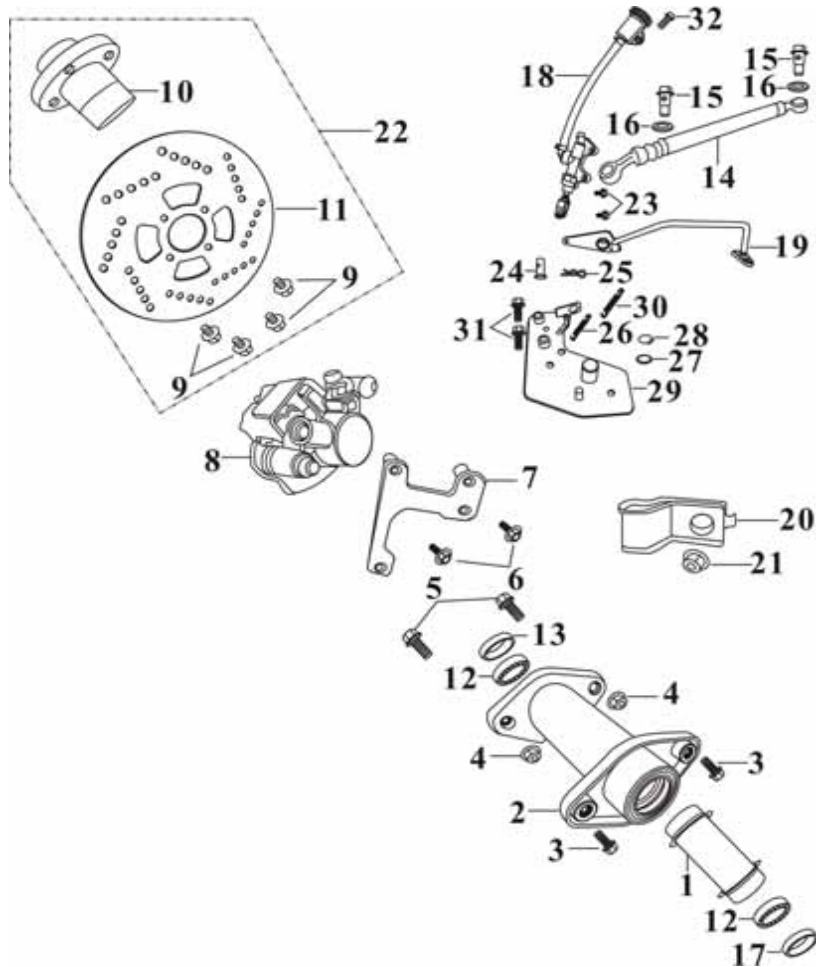
ITEM	UNISON NO.	PARTS NO.	DESCRIPTION	QTY
1	22011501	A7A-54311-00-00	TIRE K533 18X10.5-8	2
2	22011502	A2A-54210-00-00	WHEEL COMP. 8X7	2
3	22011503	A1A-52466-00-00	CASTLE NUT 14MM	2
4	22000002	A1A-54223-00-00	REAR WHEEL CONNECTOR	2
5	20000008	A1A-53268-00-00	RUBBER CAP	2
6	17000001	94061-10000-03	FLANGE U NUT 10MM	11
7	18000015	94201-22305-03	SPLIT PIN 2.2X30.5	4
8	22000004	A1A-54256-00-00	WASHER	2
9	20000006	A1A-53322-00-00	RIM VALVE	2



F10**HANDLE BAR****DC150**

ITEM	UNISON NO.	PARTS NO.	DESCRIPTION	QTY
1	23011501	A7A-72110-00-00	HANDLE COMP.	1
2	23011502	A1A-72251-00-00	GRIP	2
3	23000004	A1A-72222-00-00	HANDLE HOLDER ASSY.	2
4	23000005	A1A-72225-00-00	HANDLE HOLDER COVER,1	1
5	23000006	A1A-72235-00-00	HANDLE HOLDER COVER,2	1
6	23000003	96700-06025-02	SOCKET BOLT 6X25	4
7	23011507	A7A-68410-00-00	THROTTLE CABLE ASSY	1
8	23000023	A2A-37850-00-02	LEVEL ASSY. RIGHT	1
9	23011509	A7A-37700-00-00	LEFT HANDLE SWITCH ASSY.	1
10	17000001	94061-10000-03	FLANGE U NUT 10MM	11
11	23000010	A1A-72263-00-00	RIGHT LEVER	1
12	23000025	A2A-37851-00-02	RIGHT BODY	1



F11**REAR DISK ASSY.****DC150**

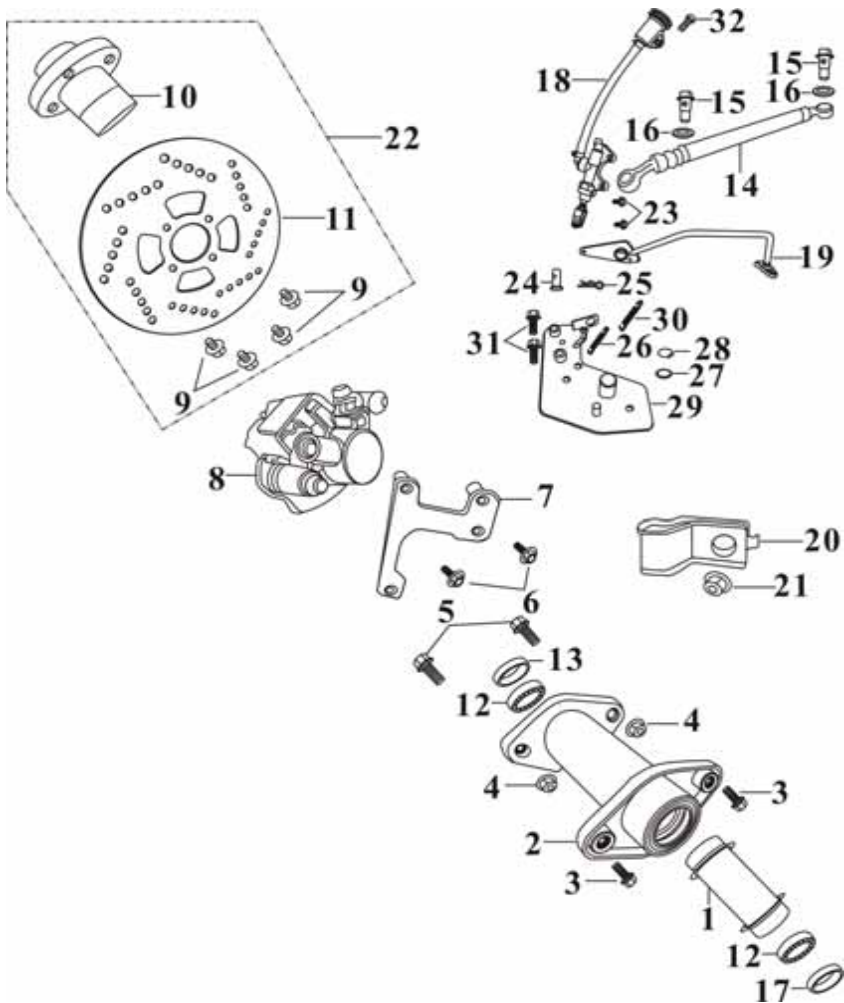
ITEM	UNISON NO.	PARTS NO.	DESCRIPTION	QTY
1	31000013	A1A-54522-00-01	SPACER TUBE	1
2	44000001	A1A-54521-00-01	REAR WHEEL AXLE SEAT	1
3	31000001	95800-12028-02	FLANGE BOLT (BLACK)	2
4	44000013	94060-12000-03	FLANGE NUT 12MM	2
5	45021505	92000-12050-02	HEX BOLT 12X50	2
6	31000003	95701-08025-01	FLANGE BOLT 8X25	2
7	44000008	A1A-56022-00-10	CALIPER STAY	1
8	44000004	A1A-56020-00-10	CALIPER ASSY	1
9	31000004	96700-06014-04	SOCKET BOLT 6X14	4
10	44000018	A1A-56034-00-00	BRAKE DISC STAY	1
11	31000006	A1A-56033-00-00	BRAKE DISC	1
12	31011509	96120-06006-02	BALL BEARING 6006Z	2
13	24000001	91201-35055-11	OIL SEAL 35X55X11	1
14	31011511	A3D-56053-00-00	BRAKE HOSE,2	1
15	44000024	A1A-56027-00-10	HOSE BOLT	8
16	31000014	94101-10143-50	PLATE WASHER	16
17	24000006	91201-40055-70	OIL SEAL 40X55X7	1



F11

REAR DISK ASSY.

DC150



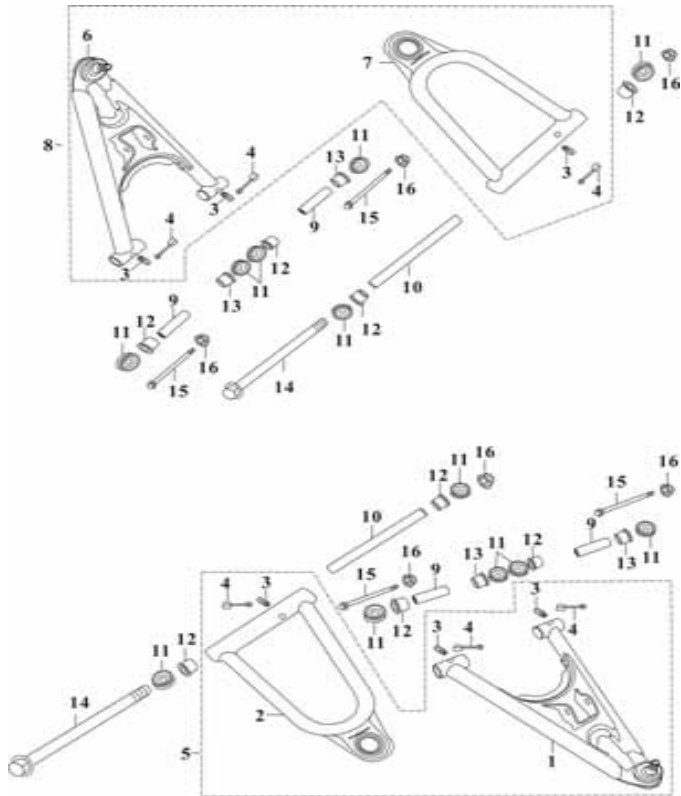
ITEM	UNISON NO.	PARTS NO.	DESCRIPTION	QTY
18	31011513	A3D-56050-00-01	MASTER CYLINDER,2	1
19	44000006	A7A-59610-00-10	BRAKE PEDAL COMP.	1
20	31000007	A1A-56044-00-00	BRAKE HOSE HOLDER	2
21	14000035	94050-08000-03	FLANGE NUT 8MM	4
22	31011515	A1A-56070-00-00	BRAKE DISC ASSY	1
23	44000007	95800-08030-02	FLANGE BOLT 8X30	2
24	31011517	A3D-59675-00-00	PIN 1	1
25	17011503	94521-12221-00	SPLIT PIN 1.2X22	1
26	31023521	A5A-59652-00-00	TENSION SPRING.1	1
27	44000009	A5A-59657-00-00	WASHER 19X25X2.0	1
28	04000011	94511-12190-00	CIR-CLIP 19MM	2
29	31000015	A5A-56035-00-10	MASTER CYLINDER BRKT	1
30	44000010	A5A-59653-00-10	TENSION SPRING,2	1
31	14000016	95800-08014-02	FLANGE BOLT 8X14	14
32	07000010	96001-06020-01	FLANGE BOLT 6X20	2



F12

SWING ARM / FOOTREST/ FEND BAR

DC150



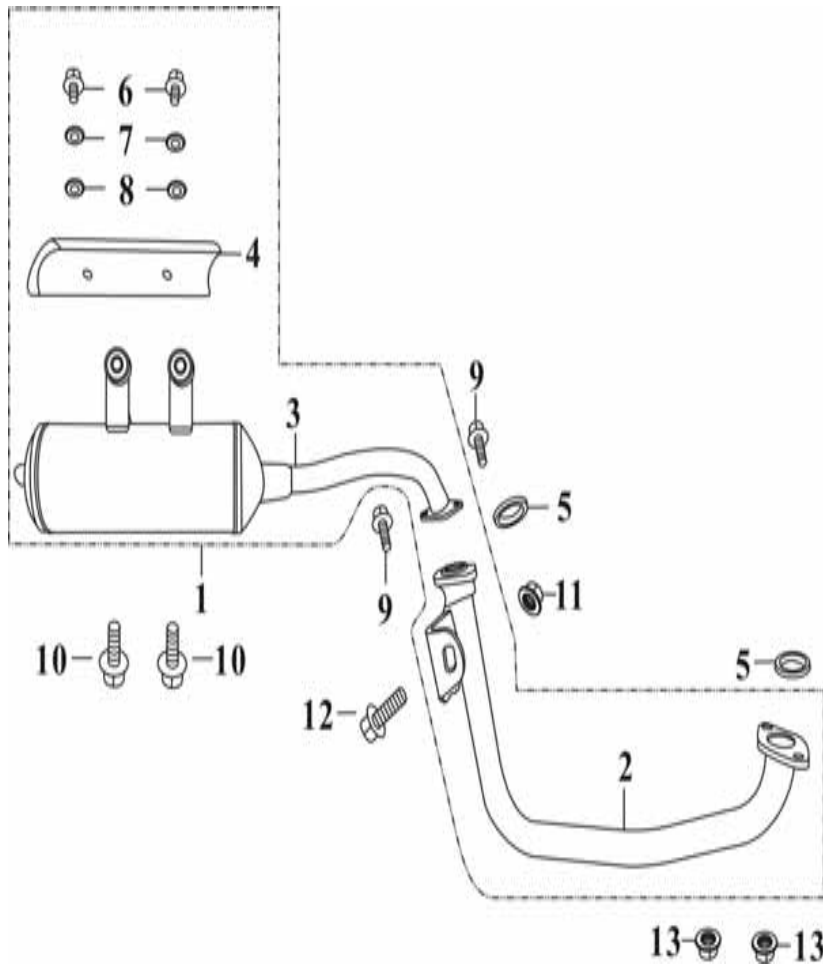
ITEM	UNISON NO.	PARTS NO.	DESCRIPTION	QTY
1	25011501	A4A-57411-00-00	LOWER A-ARM, LEFT	1
2	25000013	A4A-57412-00-00	UPPER A-ARM, LEFT	1
3	25000011	A1A-57367-00-00	GREASE VALVE	6
4	25032504	A4A-57368-00-00	GREASE VALVE CAP	6
5	25000014	A4A-57410-00-00	LEFT A-ARM ASSY.	1
6	25000015	A4A-57421-00-00	LOWER A-ARM, RIGHT	1
7	25000016	A4A-57422-00-00	UPPER A-ARM, RIGHT	1
8	25000017	A4A-57420-00-00	LOWER A-ARM ASSY.	1
9	25000012	A4A-57427-00-00	DISTANCE COLLAR, 1	4
10	25000018	A4A-57428-00-00	DISTANCE COLLAR, 2	2
11	25000019	A4A-57419-00-00	DUST SEAL COVER	12
12	25000020	A4A-57447-00-00	BUSH, 1	8
13	25000021	A4A-57448-00-00	BUSH, 2	4
14	14000034	A4A-53511-00-00	FLANGE BOLT 10X198	2
15	25000025	95800-10080-03	FLANGE BOLT 10X80	4
16	17000001	94061-10000-03	FLANGE U NUT 10MM	11



F13

MUFFLER ASSY.

DC150



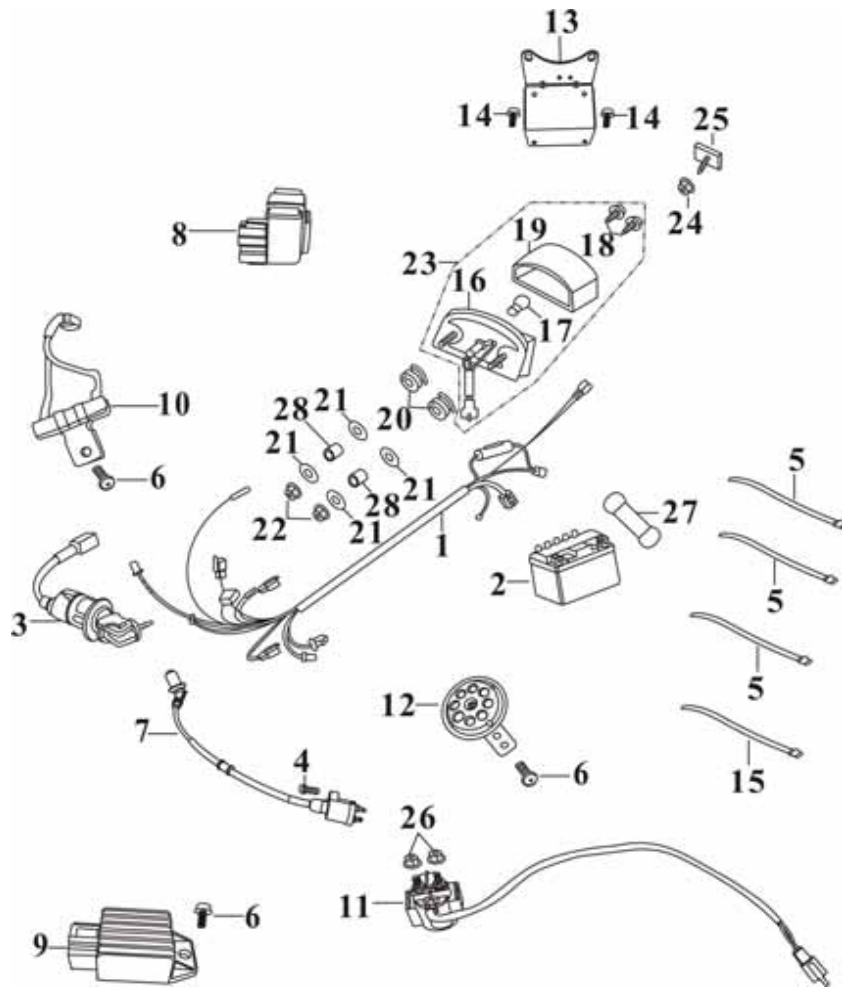
ITEM	UNISON NO.	PARTS NO.	DESCRIPTION	QTY
1	26011501	A7A-28200-00-01	EXHAUST PIPE ASSY.	1
2	26011502	A7A-28220-00-00	FR. PIPE COMP.	1
3	26011503	A7A-28230-00-01	RR. PIPE COMP.	1
4	26000004	A1A-28112-00-00	MUFFLER PROTECTOR, 2	1
5	26000012	A4A-28131-00-00	EXHAUST PIPE GASKET (26.2*33.1*3.7)	2
6	26000005	96000-06012-70	FLANGE BOLT 6X12	2
7	26000006	94101-06083-70	PLATE WASHER 6MM	2
8	26010508	94101-06084-90	PLATE WASHER 6MM	2
9	26000013	95800-06025-02	FLANGE BOLT 6X25	4
10	26000014	95802-08032-02	FLANGE BOLT 8X32	2
11	14000020	94051-08000-03	FLANGE NUT 8MM	6
12	26000015	95800-08050-03	FLANGE BOLT 8X50	2
13	14000035	94050-08000-03	FLANGE NUT 8MM	2



F14

ELECTRICAL PARTS

DC150



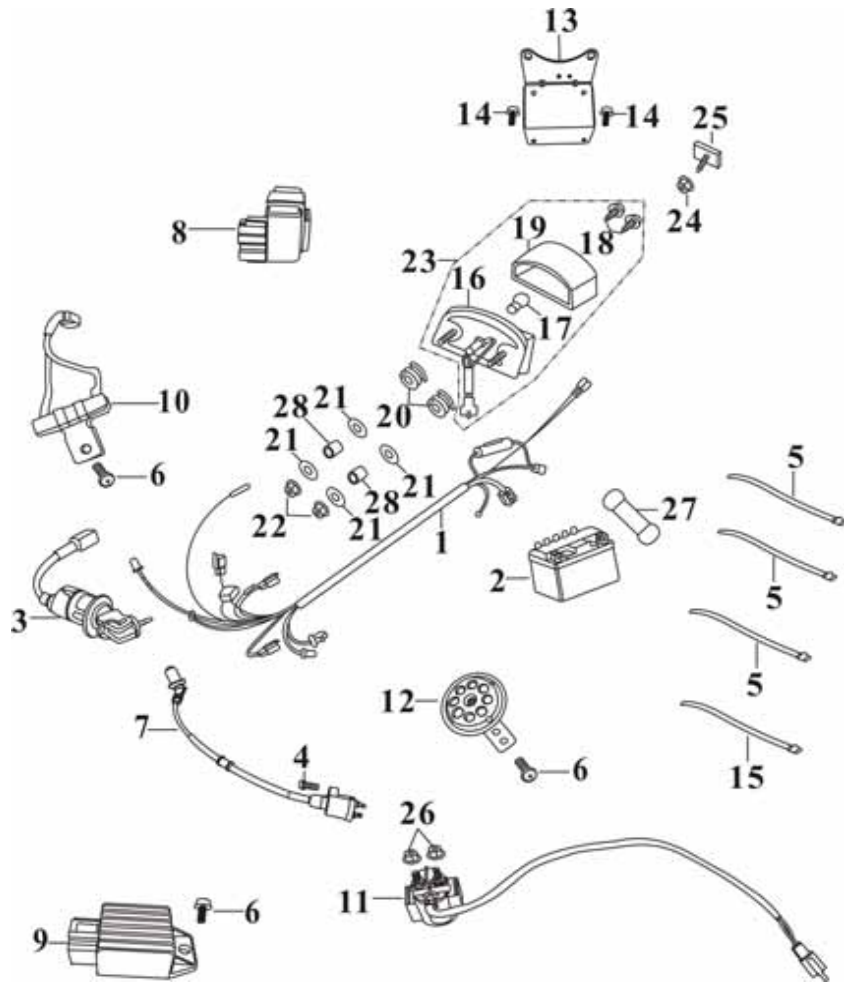
ITEM	UNISON NO.	PARTS NO.	DESCRIPTION	QTY
1	27011501	A7A-33610-00-00	WIRE HARNESS ASSY.	1
2	27000092	A1A-33410-00-01	BATTERY ASSY.	1
3	27000034	A4A-66210-00-00	MAIN SWITCH ASSY.	1
4	27000029	93500-05022-02	PAN HEAD SCREW 5X22	1
5	27000039	94402-02502-01	BAND 250	10
6	25000010	95800-06012-04	FLANGE BOLT 6X12	5
7	27000030	M4A-33140-00-00	IGNITION OIL ASSY.	1
8	27000031	M4A-33110-00-00	C.D.I. ASSY.	1
9	27000032	M4A-31310-00-00	REG. REC. COMP.	1
10	27000007	A1A-38410-00-00	RESISTOR COMP.	1
11	27000045	M4A-38310-00-00	STARTER RELAY ASSY.	1
12	27000010	A1A-38210-00-00	HORN	1
13	27000094	A1A-35400-00-00	TAIL LIGHT ASSY.	1
14	04000008	94001-06000-04	FLANGE NUT 6MM	2
15	27000002	94404-03001-01	BAND 300MM	1
16	27000011	A1A-35411-00-00	TAIL LIGHT BASE	1
17	27000035	A1A-35451-00-00	BULB 12V-21/5W	1



F14

ELECTRICAL PARTS

DC150



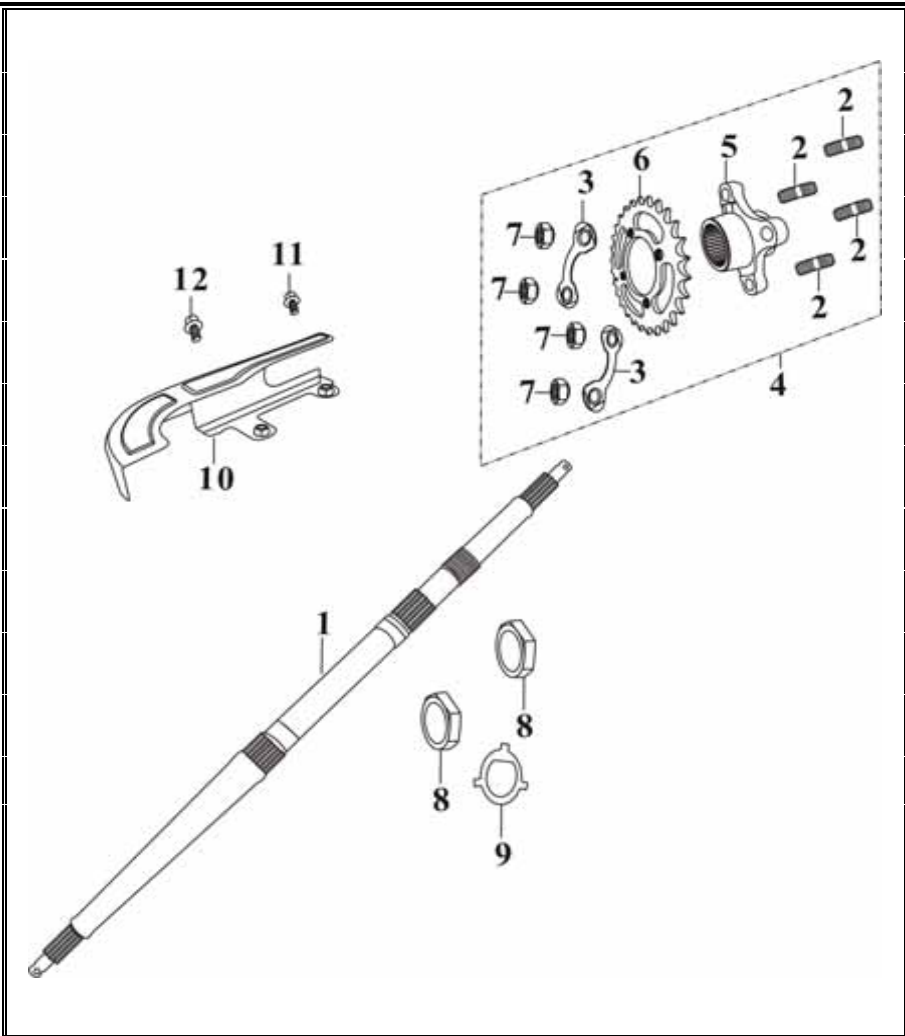
ITEM	UNISON NO.	PARTS NO.	DESCRIPTION	QTY
18	27000012	93910-04038-03	TAPPING SCREW 4X38	2
19	27000013	A1A-35412-00-00	TAIL LIGHT LENS	1
20	14000044	A1A-52158-00-00	DAMPER,3	7
21	09000002	94101-06193-00	PLATE WASHER 6MM	2
22	15000014	94051-06000-01	FLANGE U NUT 6MM	14
23	27000094	A1A-35400-00-00	TAIL LIGHT ASSY.	1
24	27000016	94050-05000-01	FLANGE NUT 5MM	1
25	27000015	A1A-35427-00-00	RR. REFLECTOR (E MARK)	2
26	04000008	94001-06000-04	FLANGE NUT 6MM	2
27	27000023	A4A-33437-00-10	BAND HOLDER	1
28	27000021	M5A-16567-00-10	COLLER	3



F15

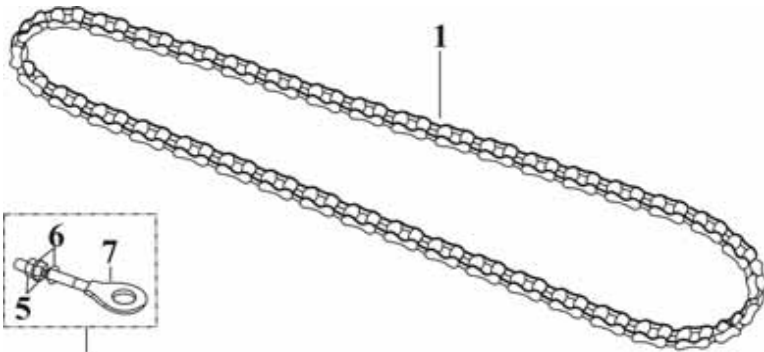
REAR WHEEL AXLE

DC150



ITEM	UNISON NO.	PARTS NO.	DESCRIPTION	QTY
1	28011501	A1A-54511-00-02	REAR WHEEL AXLE	1
2	28011502	A4A-26957-00-01	STUD BOLT 10MM	4
3	28000009	A4A-26958-00-00	TOUNGED WASHER	2
4	28011503	A4A-26950-00-01	SPROCKET ASSY.	1
5	28000010	A4A-26955-00-00	SPROCKET HOLDER	1
6	28011504	A4A-26930-00-01	SPROCKET	1
7	29000011	94001-08000-03	HEX. NUT 8MM	6
8	28000007	A1A-54524-00-00	CASTLE NUT 28MM	2
9	28000092	A1A-54537-00-00	WASHER	1
10	28011507	A1B-26942-00-10	CHAIN CASE, 2	1
11	44000007	95800-08030-02	FLANGE BOLT 8X30	2
12	14000006	95701-08036-02	HEX. FLANGE BOLT 8X36	4



F16**CHAIN****DC150**

ITEM	UNISON NO.	PARTS NO.	DESCRIPTION	QTY
1	29011501	A7A-26960-00-01	DRIVE CHAIN 520(H)X72	1
2	29011502	A7A-26941-00-00	PROTECTOR COVER	1
3	14000019	95800-08016-02	FLANGE BOLT 8X16	8
4	29000005	A1A-56470-00-00	CHAIN ADJUSTER ASSY., 1	1
5	29000004	94001-06000-01	HEX NUT 6MM	1
6	29000006	94101-06131-01	WASHER	1
7	29000007	A1A-56471-00-00	CHAIN ADJUSTER	1
8	29000003	95800-08012-02	FLANGE BOLT 8X12	4

