



UNISON

ILLUSTRATED PARTS LIST

RAGE 250 & MOBILITY 250

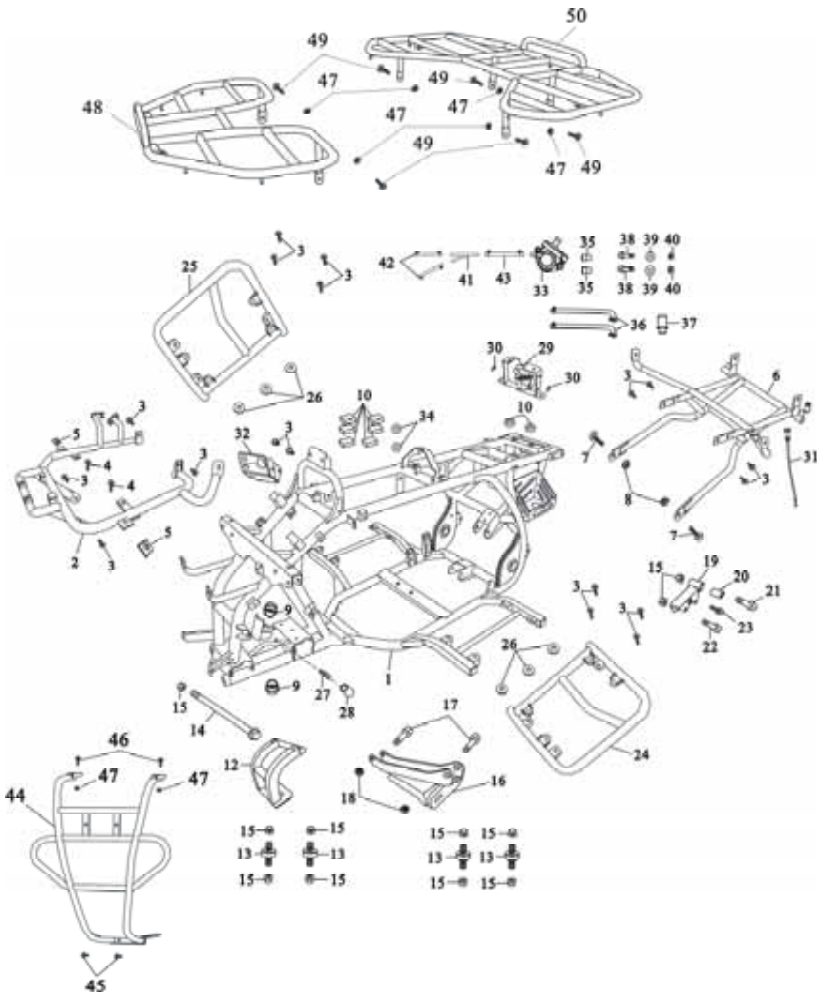
MODELS 2004 AND UP (VER.A)

250cc SERIES

F1

FRAME BODY

M250CC



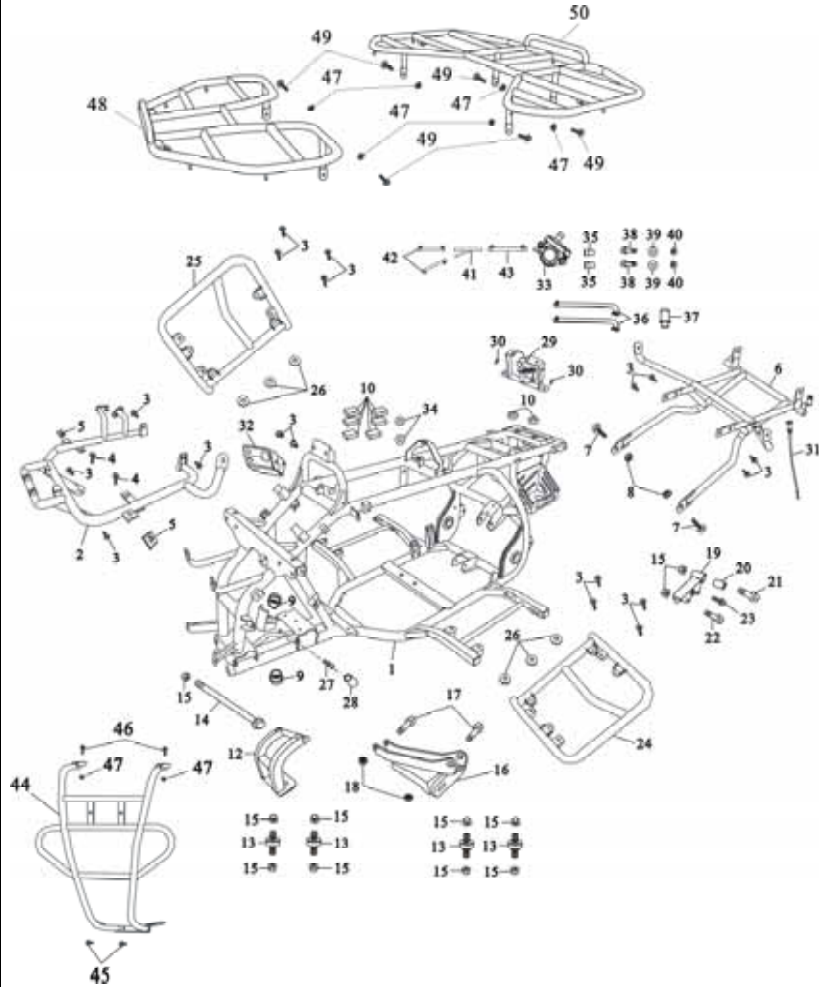
ITEM	UNISON NO.	PARTS NO.	DESCRIPTION	QTY
1	14052501	B2A-51110-00-00	FRAME ASSY.(M9C SHAFT TRANSMISSION)	1
2	14052502	B2A-52110-00-00	FRONT FRAME	1
3	14000016	95800-08014-02	FLANGE BOLT 8X14	14
4	14000019	95800-08016-02	FLANGE BOLT 8X16	8
5	15000007	A1A-73518-00-00	CLIP NUT 6MM	12
6	14052503	B2A-52120-00-00	REAR FRAME	1
7	14052507	95701-10025-02	FLANGE BOLT 10X25	2
8	17000001	94061-10000-03	FLANGE U NUT 10MM	8
9	14021509	A4A-52197-00-00	HOLDER SEAT	2
10	14000024	A1A-52146-00-00	RUBBER	2
11	14000023	A1A-52156-00-00	DAMPER,1	8
12	14052512	B2A-52171-00-00	E / G HANGER BRKT.	1
13	14052513	C2A-52173-00-00	RUBBER BUSH	4
14	14052514	95802-10210-01	FLANGE BOLT 10X210	1
15	17000001	94061-10000-03	FLANGE U NUT 10MM	8



F1

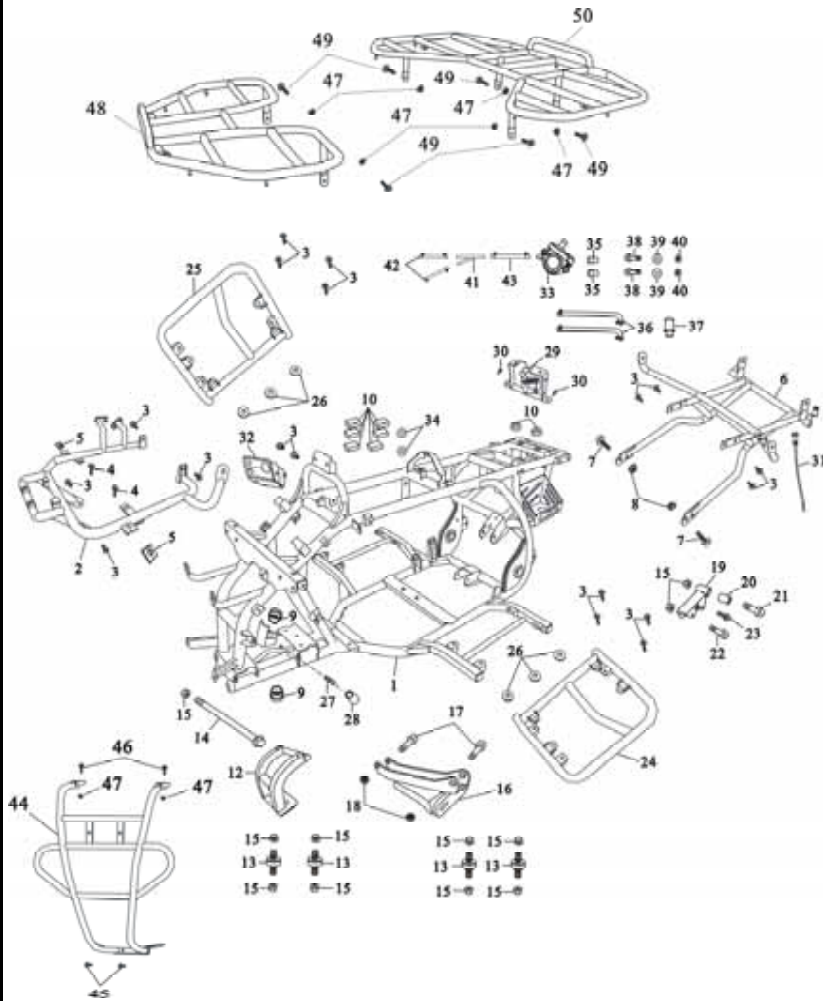
FRAME BODY

M250CC



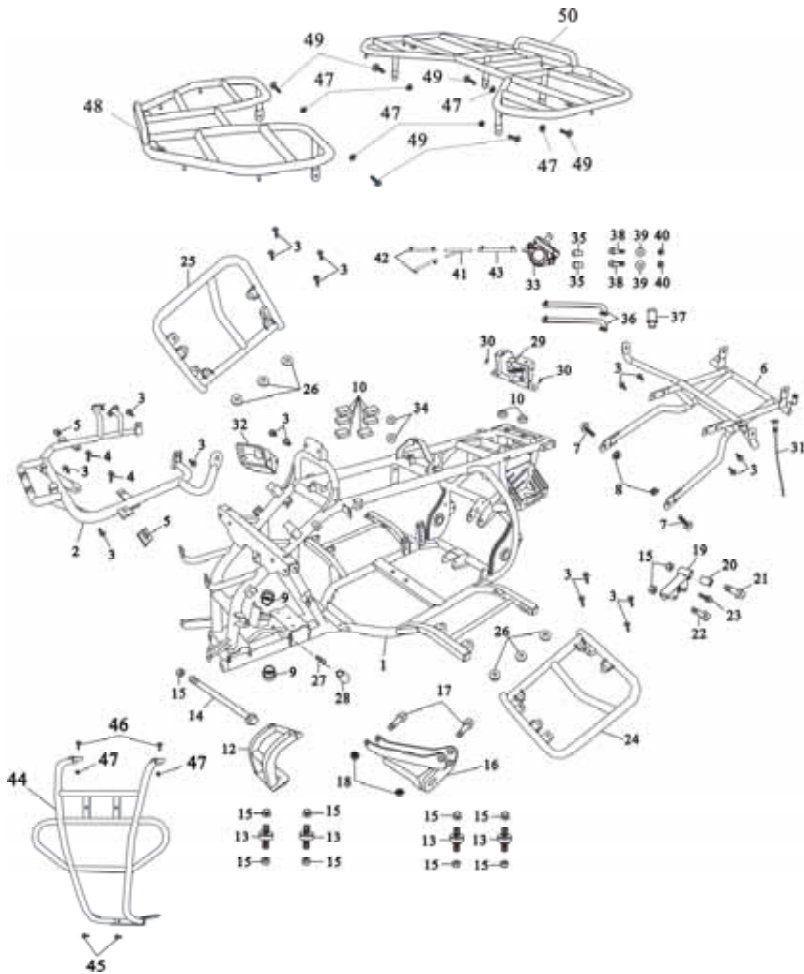
ITEM	UNISON NO.	PARTS NO.	DESCRIPTION	QTY
16	14052516	SEA-50380-00	E / G HANGER BRKT	1
17	26000015	95800-08050-03	FLANGE BOLT 8X50	2
18	14052518	94061-08000-03	U NUT 8MM	2
19	14052519	C2A-52174-00-00	E / G HANGER BRKT	1
20	14032512	A9A-52173-00-10	BUSH (RG 250)	4
21	14052521	95802-10065-03	FLANGE BOLT 10X65	2
22	14052522	95802-10054-01	FLANGE BOLT 10X54	1
23	14000058	95800-06016-02	FLANGE BOLT 6X16	4
24	14052524	B2A-59551-00-00	L.FOOTREST	1
25	14052525	B2A-59561-00-00	R.FOOTREST	1
26	14000025	A7A-52158-00-00	DAMPER,3	2
27	25000011	A1A-57367-00-00	GREASE VALVE	6
28	25000005	A1A-57368-00-00	GREASE VALVE CAP	2
29	14052529	B1A-66511-00-00	SEAT LOCK SWITCH	1
30	14000058	95800-06016-02	FLANGE BOLT 6X16	4



F1**FRAME BODY****M250CC**

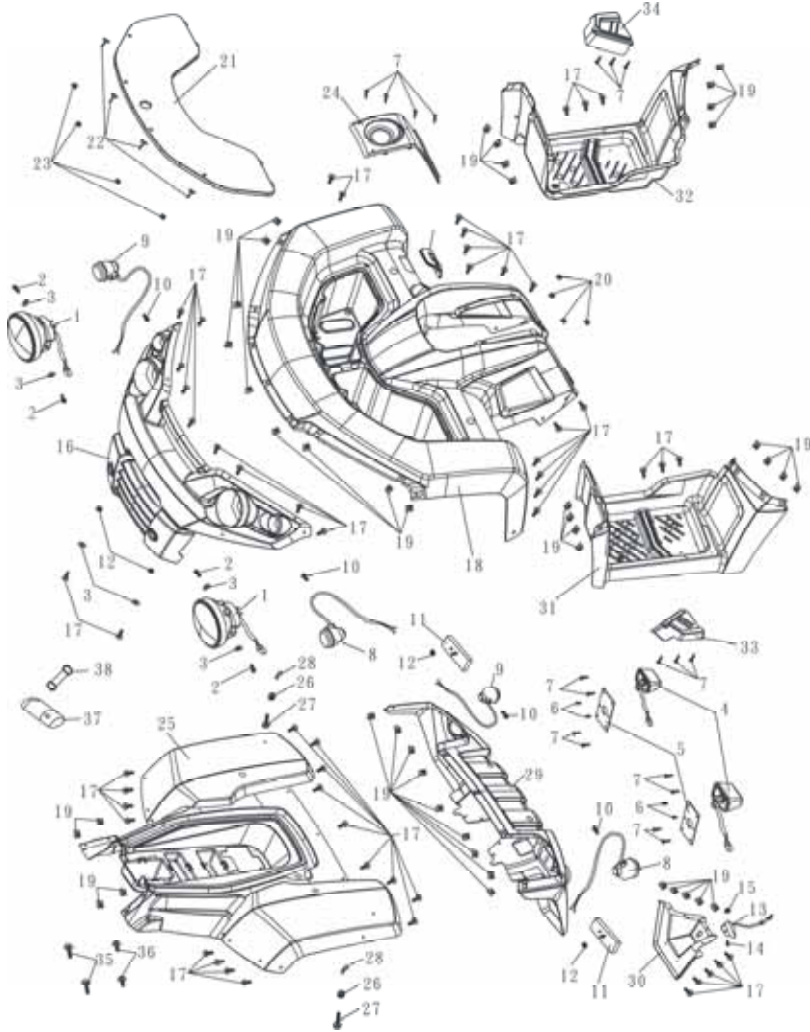
ITEM	UNISON NO.	PARTS NO.	DESCRIPTION	QTY
31	24000011	A1A-56443-00-00	REAR BRAKE COVER	1
32	29000003	95800-08012-02	FLANGE BOLT 8X12	2
33	14052533	C2D-62810-00-00	REED VALVE	1
34	14000044	A1A-52158-00-00	DAMPER,3	7
35	14052535	C2D-62823-00-00	COLLAR 17MM	2
36	26000023	A3D-62814-00-00	INTAKE AIR DUCT	2
37	14052537	C2D-62815-00-00	HOSE JOINT	1
38	07000009	96001-06035-02	FLANGE BOLT 6X35	2
39	09000002	94101-06193-00	PLATE WASHER 6MM	4
40	15000014	94051-06000-01	FLANGE U NUT 6MM	14
41	14052541	M5A-19487-00-00	THREE-WAY TUBE (Y TYPE)	1
42	14052542	M9C-19488-00-00	VACUUM TUBE,1 (100M)	3
43	14052543	M9C-19498-00-00	VACUUM TUBE,2 (500M)	1
44	14052544	B2A-52151-00-00	FRONT FENDER ROD	1
45	14000016	95800-08014-02	FLANGE BOLT 8X14	14



F1**FRAME BODY****M250CC**

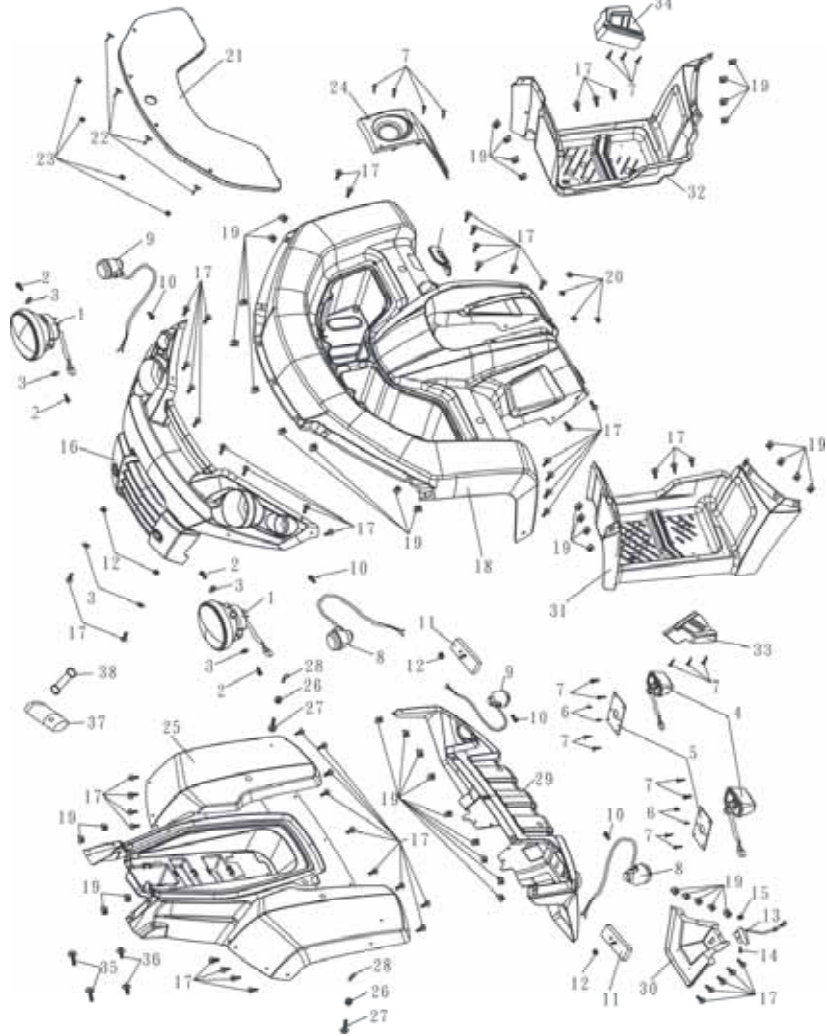
ITEM	UNISON NO.	PARTS NO.	DESCRIPTION	QTY
46	14000019	95800-08016-02	FLANGE BOLT 8X16	8
47	14052547	94051-08000-01	FLANGE NUT 8MM	8
48	14052548	B1A-77110-00-00	FRONT CARRY CARGO RACK	1
49	14000010	95800-08020-02	FLANGE BOLT 8X20	4
50	14052550	B1A-77210-00-00	REAR CARRY CARGO RACK	1



F2**SIDE COVER****M250CC**

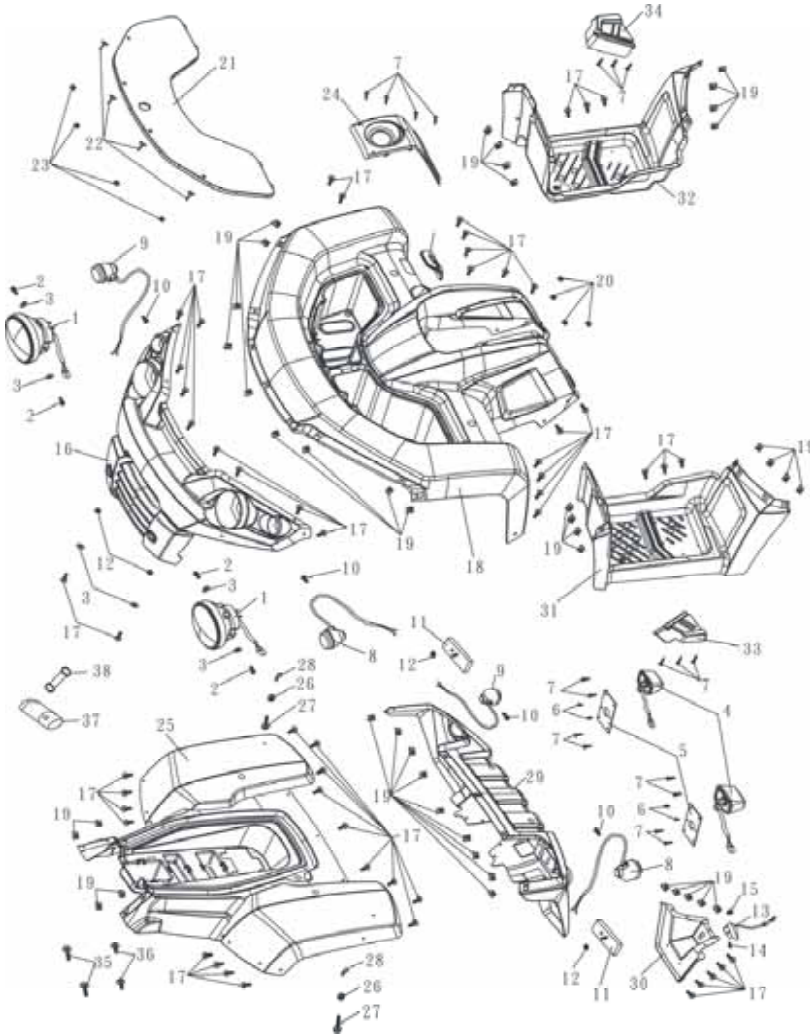
ITEM	UNISON NO.	PARTS NO.	DESCRIPTION	QTY
1	15052501	B1A-35100-00-00	HEAD LIGHT ASSY. (A012)	2
2	15052502	93891-05014-02	SCREW W/W ASHER 5X14	4
3	09000002	94101-06193-00	PLATE WASHER 6MM	4
4	15052504	B1A-35400-00-00	TAIL LIGHT ASSY. (D08-T)	2
5	15052505	B1A-35437-00-00	TAIL LIGHT BRACKET	2
6	15032520	93502-05012-02	PAN HEAD W/S 5X10 (RG 250)	2
7	15032503	93900-05016-04	TAPPING SCREW 5X16	10
8	15052508	B1A-35620-00-00	FLASHER LIGHT ,1 (W03-FL)	2
9	15052509	B1A-35630-00-00	FLASHER LIGHT ,2 (W03-FR)	2
10	27000014	93891-06020-04	PAN HEAD SCREW 6X20	4
11	27000015	A1A-35427-00-00	RR. REFLECTOR (E MARK)	2
12	15000014	94051-06000-01	FLANGE U NUT 6MM	14
13	15052513	B1A-35710-00-00	LICENSE LIGHT	1
14	15052514	93600-05015-01	FLAT HEAD SCREW	1
15	27000016	94050-05000-01	FLANGE NUT 5MM	1



F2**SIDE COVER****M250CC**

ITEM	UNISON NO.	PARTS NO.	DESCRIPTION	QTY
16	15052516	B1A-74111-00-00	FRONT PROTECTION PLATE	1
17	15000006	93530-06018-02	PAN HEAD SCREW 6X18	40
18	15052518	B1A-73511-00-00	FRONT COVER	1
19	15000007	A1A-73518-00-00	CLIP NUT 6MM	12
20	15000016	A1A-73519-00-00	CLIP NUT 5MM	4
21	15052521	B1A-73535-00-00	GLOVE COMPARTMENT	1
22	15052522	B1A-73536-00-00	PAPILIONACEOUS BOLT	4
23	15052523	B1A-73537-00-00	CLIP NUT 4MM	4
24	15052524	B1A-63125-00-00	OIL BOX COVER	1
25	15052525	B1A-73521-00-00	SIDE COVER	1
26	14000044	A1A-52158-00-00	DAMPER,3	7
27	15052527	93424-06025-03	BOLT W/WASHER 6X25	2
28	44000005	94251-12221-00	SPLIT PIN 1.2X22	2
29	15052529	B1A-74211-00-00	REAR PROTECTION PLATE	1
30	15052530	B1A-74241-00-00	LICENSE PLATE FIX PLANK	1



F2**SIDE COVER****M250CC**

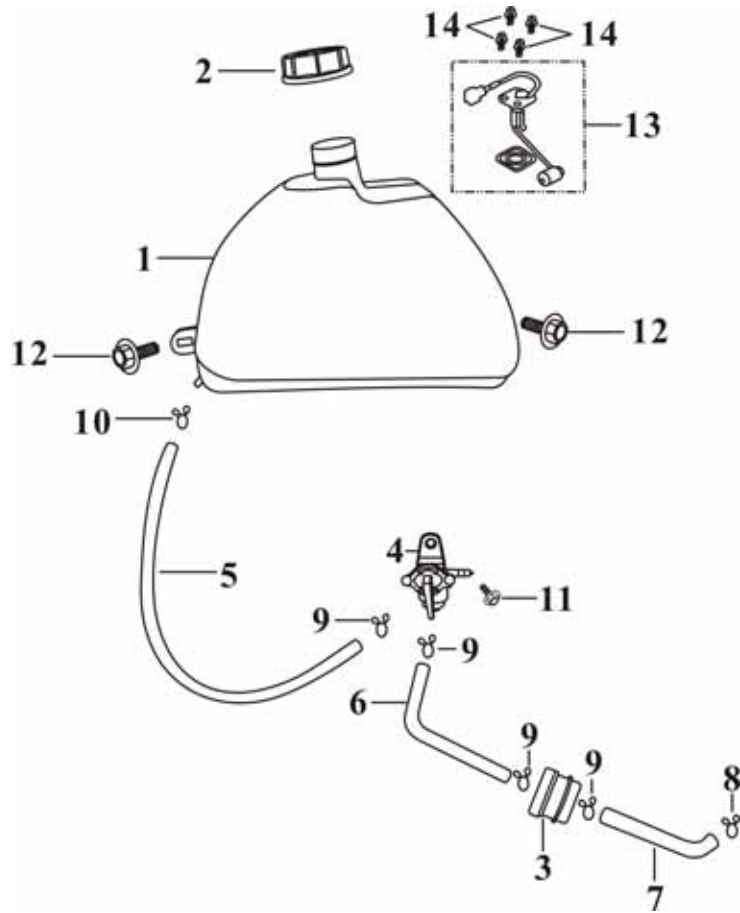
ITEM	UNISON NO.	PARTS NO.	DESCRIPTION	QTY
31	15052531	B1A-73411-00-00	RUNNING BOARD,L	1
32	15052532	B1A-73421-00-00	RUNNING BOARD,R	1
33	15052533	B1A-73431-00-00	RUNNING BOARD PASSENGER,L	1
34	15052534	B1A-73441-00-00	RUNNING BOARD PASSENGER,R	1
35	15000008	93404-06020-03	BOLT W/ WASHER 6X20	6
36	15000013	93404-06016-03	BOLT W/WASHER 6X16	6
37	15052537	C2A-81110-00-00	TOOL KIT M9C-18MM (L=105)	1
38	27000017	A1A-81113-00-00	RUBBER	1



F3

FUEL TANK

M250CC

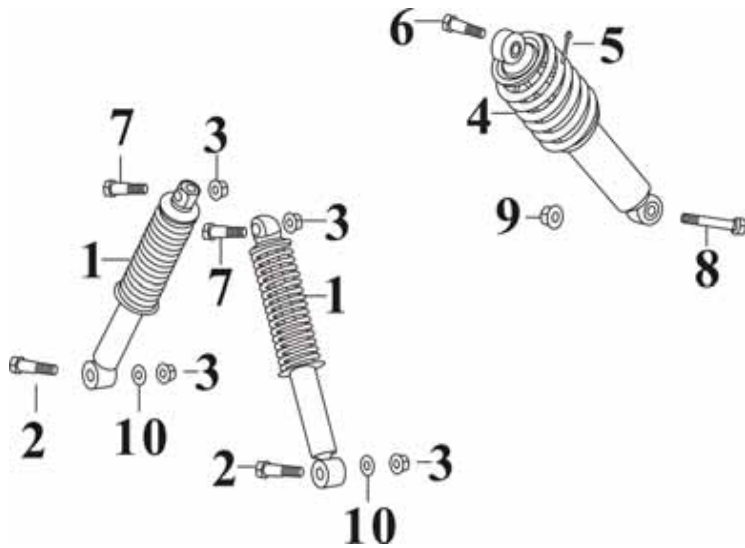


ITEM	UNISON NO.	PARTS NO.	DESCRIPTION	QTY
1	16052501	A4A-62110-00-00	FUEL TANK	1
2	16052502	A4A-62210-00-00	FUEL TANK CAP	1
3	16000014	A1A-62410-00-00	FUEL FILTER ASSY.	1
4	16052504	A1B-62310-00-00	FUEL PETCOCK	1
5	16052505	A4A-62371-00-10	FUEL HOSE,1	1
6	16052506	A4A-62372-00-10	FUEL HOSE,2	1
7	16052507	A4A-62373-00-10	FUEL HOSE,3	1
8	16052508	94201-08085-00	CLIP	2
9	16052509	94201-12095-00	CLIP	3
10	16052510	94204-08110-00	CLIP	1
11	16052511	95800-06016-04	FLANGE BOLT 6X16	1
12	15000008	93404-06020-03	BOLT W/ WASHER 6X20	6
13	16052513	A4A-62510-00-10	SENDER UNIT ASSY.	1
14	16052514	93891-05014-04	BOLT W/WASHER 5X14	4



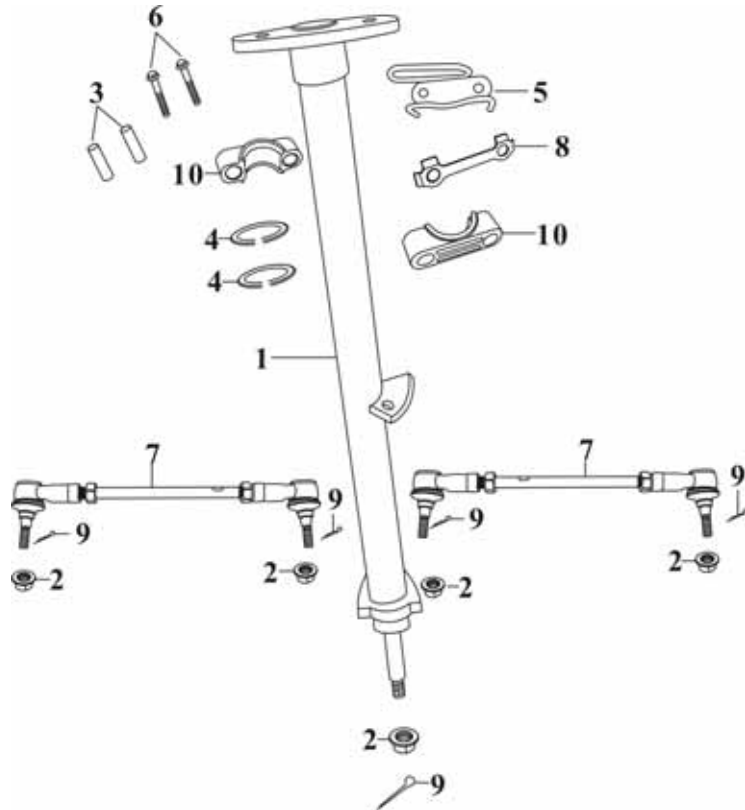
F4**SUSPENSION****M250CC**

ITEM	UNISON NO.	PARTS NO.	DESCRIPTION	QTY
1	17052501	B1A-57210-10-00	FR.SHOCK ABSORBER ASSY.	2
2	17000003	95801-10054-03	FLANGE BOLT 10X54	2
3	17000001	94061-10000-03	FLANGE U NUT 10MM	11
4	17052504	A9A-58210-10-00	RR. SHOCK ABSORBER	1
5	44000005	94251-12221-00	SPLIT PIN 1.2X22	2
6	17000094	95827-10040-04	BOLT W/HOLE 10X40	1
7	17000011	95802-10045-03	FLANGE BOLT 10X45	2
8	17032508	95802-12078-03	FLANGE BOLT 12X78	1
9	14000012	94061-12000-03	FLANGE U NUT 12MM	2
10	10000002	94101-10185-27	PLATE WASHER 10MM	2



F5**STEERING****M250CC**

ITEM	UNISON NO.	PARTS NO.	DESCRIPTION	QTY
1	18052501	B2D-72140-00-00	SHAFT STEERING	1
2	17000001	94061-10000-03	FLANGE U NUT 10MM	8
3	18032503	A4A-72141-00-00	HOLDER COLLAR (RG 250)	2
4	18052504	A4A-72167-00-00	DUST SEAL	2
5	18032505	A4A-72156-00-00	BRAKE CABLE SEAT (RG 250)	1
6	18052506	92000-08060-01	HEX. BOLT 8X60	2
7	18052507	C2A-72143-00-00	STEERING TIE.ROD ASSY,1	2
8	18000021	A4A-72157-00-00	TONGUED WASHER	1
9	18000015	94201-22305-03	SPLIT PIN 2.2X30.5	4
10	18000020	A4A-72146-00-00	HOLDER,STEERING SHAFT	2

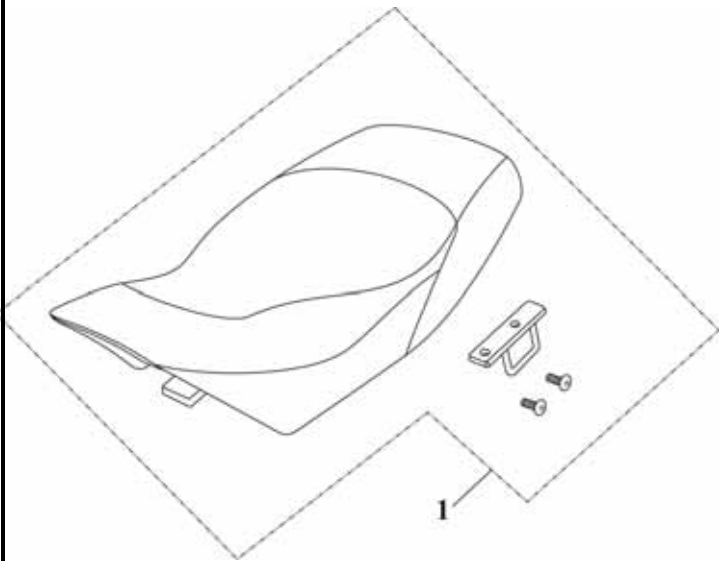


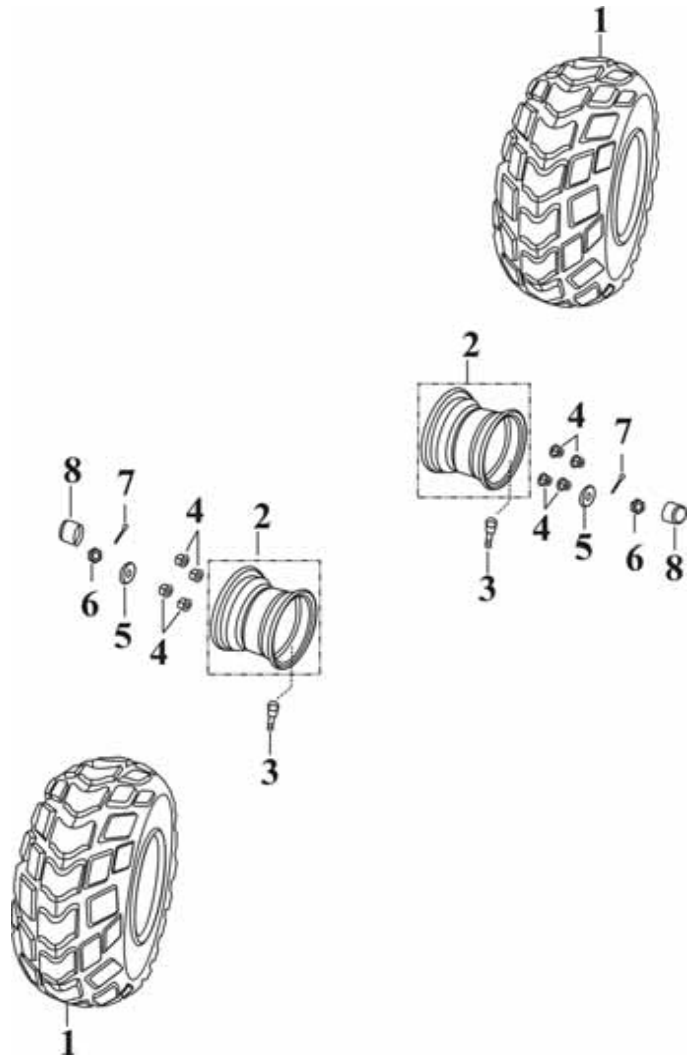
F6

SEAT ASSY

M250CC

ITEM	UNISON NO.	PARTS NO.	DESCRIPTION	QTY
1	19052501	B1A-76110-00-00	SEAT ASSY.	1



F7**FRONT WHEEL****M250CC**

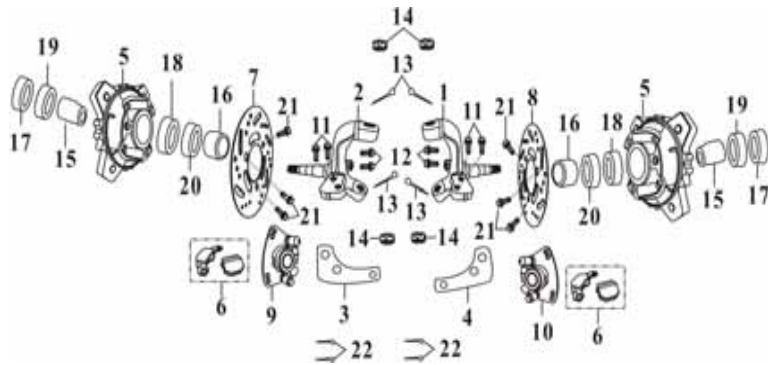
ITEM	UNISON NO.	PARTS NO.	DESCRIPTION	QTY
1	20052501	A5D-53311-00-00	TIRE 21X7-10	2
2	20052502	A4A-53210-00-02	RIM SET	2
3	20000006	A1A-53322-00-00	RIM VALVE	2
4	20000013	A4A-54267-00-00	CONE NUT 10MM	8
5	20052505	A4A-54256-00-00	WASHER	2
6	20000011	A4A-54266-00-00	CASTLE NUT 14MM	2
7	18032509	94201-30550-03	COTTER PIN	2
8	20000008	A1A-53268-00-00	RUBBER CAP	2



F8

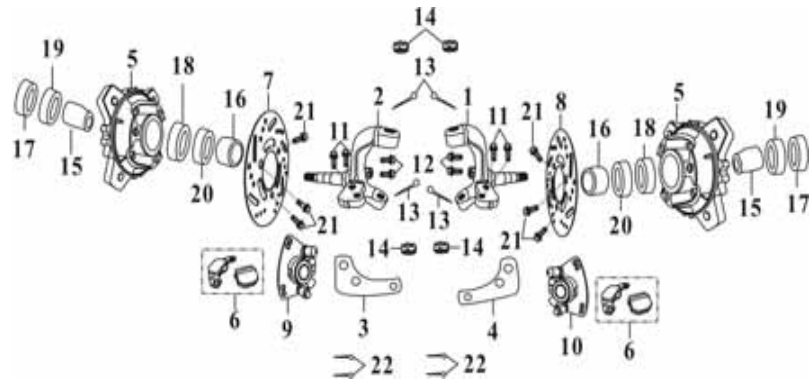
FRONT BRAKE

M250CC



ITEM	UNISON NO.	PARTS NO.	DESCRIPTION	QTY
1	21032501	A4A-72144-00-01	KNUCKLE,1	1
2	21032502	A4A-72154-00-01	KNUCKLE,2	1
3	21052503	C2A-72185-00-00	TIE.ROD BRKD,1	1
4	21052504	C2A-72195-00-00	TIE.ROD BRKD,2	1
5	21032505	A5A-55480-00-00	FRONT WHEEL DRUM ASSY.	2
6	24000021	A3D-56023-00-00	BRAKE PADS	2
7	21032507	A5A-55003-00-00	FRONT BRAKE DISC,1 (L)	1
8	21032508	A5A-55004-00-00	FRONT BRAKE DISC,2 (R)	1
9	21032509	A5A-55010-00-01	FRONT BRAKE CALIPER,1 (L)	1
10	21032510	A5A-55020-00-01	FRONT BRAKE CALIPER,2 (R)	1
11	21000025	95807-10030-02	FLANGE BOLT 10X30 (RG 250)	4
12	14000010	95800-08020-02	FLANGE BOLT 8X20	4
13	18000015	94201-22305-03	SPLIT PIN 2.2X30.5	4
14	20000007	A1A-53266-00-00	CASTLE NUT 12MM	2
15	21032515	A4A-55446-00-00	COLLAR	2



F8**FRONT BRAKE****M250CC**

ITEM	UNISON NO.	PARTS NO.	DESCRIPTION	QTY
16	20032508	A4A-55456-00-00	COLLAR 23X16X8.5	2
17	20032509	91201-23035-70	OIL SEAL 23X35X7	2
18	20032510	96120-06004-20	BALL BEARING 6004 LU	2
19	20032511	96120-06003-20	BALL BEARING 6003 LU (RG 250)	2
20	07000035	91201-27042-70	OIL SEAL 27X42X7	2
21	21032521	A5A-55037-00-00	SOCKET BOLT (RG 250)	6
22	18000003	94201-18213-03	SPLIT PIN 1.8X21.3	4

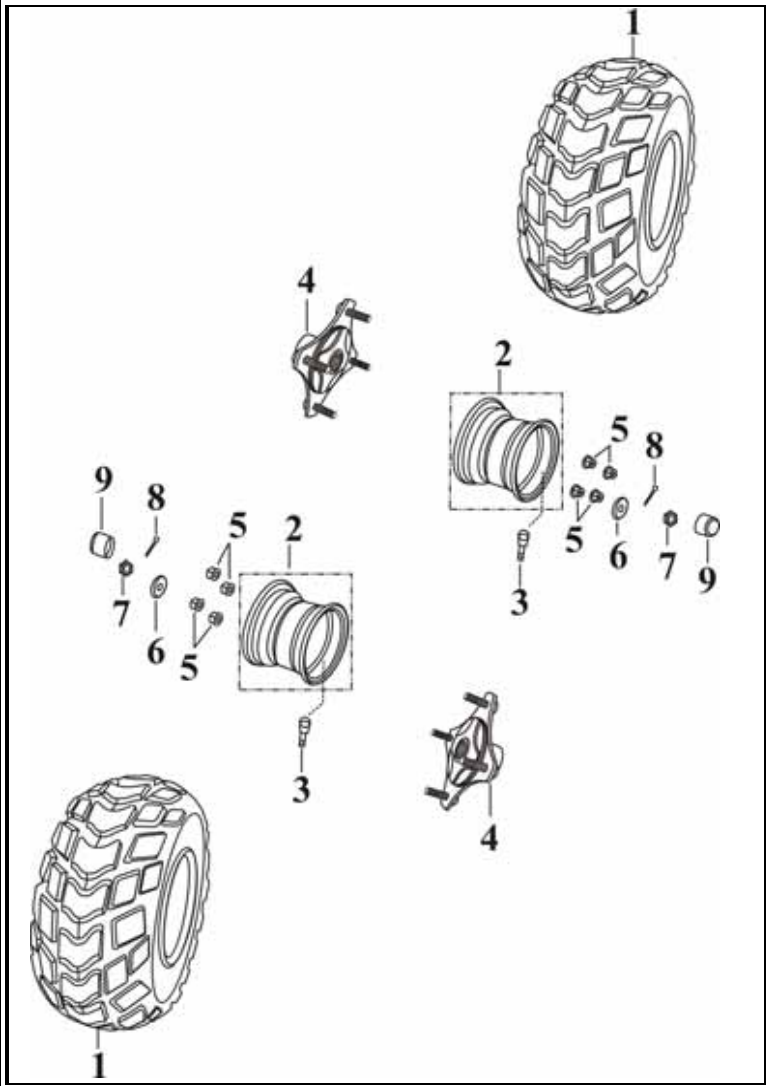


F9

REAR WHEEL

M250CC

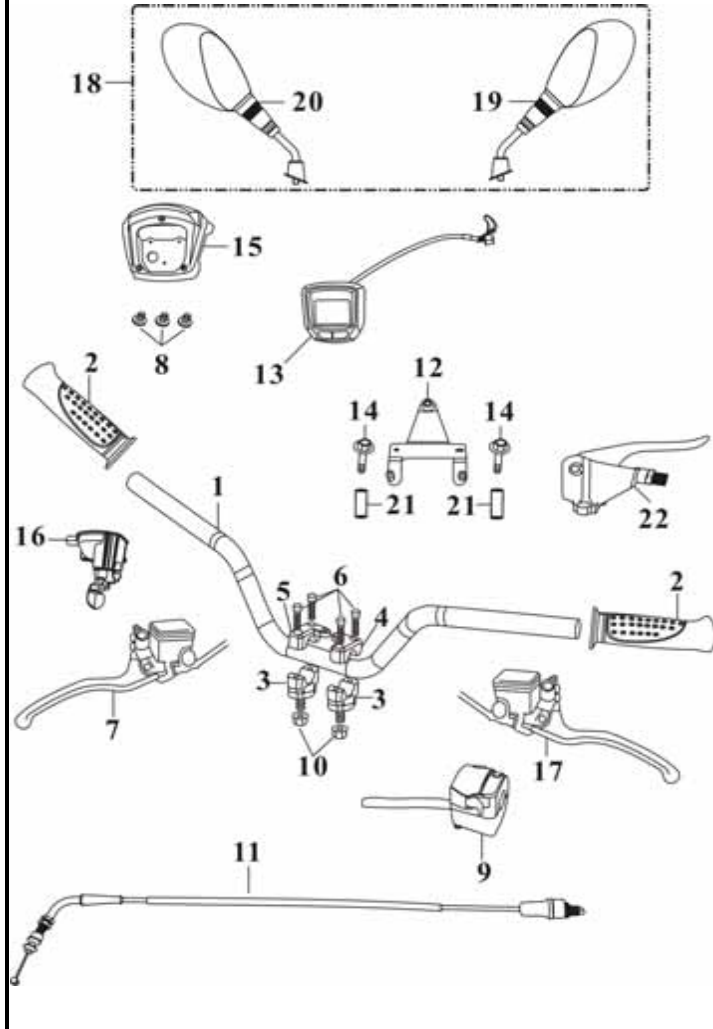
ITEM	UNISON NO.	PARTS NO.	DESCRIPTION	QTY
1	22052501	A5D-54311-00-00	TIRE 22X10-10	2
2	22052502	A4A-54210-00-03	RIM SET	2
3	20000006	A1A-53322-00-00	RIM VALVE	2
4	22052504	A4A-54223-00-02	REAR WHEEL CONNECTER (DCD 130)	2
5	20000013	A4A-54267-00-00	CONE NUT 10MM	8
6	22000004	A1A-54256-00-00	WASHER	2
7	20000011	A4A-54266-00-00	CASTLE NUT 14MM	2
8	18000003	94201-18213-03	COTTER PIN	4
9	20000008	A1A-53268-00-00	RUBBER CAP	2



A10

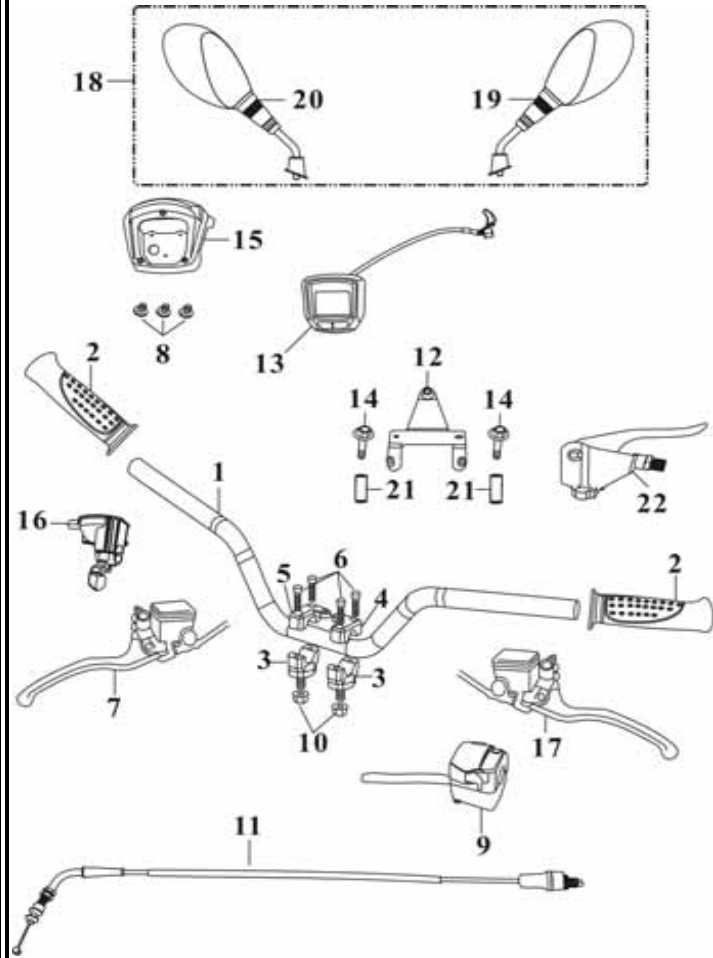
HANDLE BAR

M250CC



ITEM	UNISON NO.	PARTS NO.	DESCRIPTION	QTY
1	23000028	A4A-72110-00-00	HANDLE COMP	1
2	23000001	A1A-72251-00-01	GRIP	2
3	23052503	A1A-72222-00-10	LOWER HANDLE BAR CLAMP ASSY.	2
4	23000005	A1A-72225-00-00	HANDLE HOLDER COVER,1	1
5	23000006	A1A-72235-00-00	HANDLE HOLDER COVER,2	1
6	23000003	96700-06025-02	SOCKET BOLT 6X25	4
7	23052507	A5A-55000-00-00	R. HANDLE MASTER CYC. ASSY.	1
8	15032520	93502-05012-02	PAN HEAD W/S 5X10 (RG 250)	2
9	23052509	A4A-37700-00-01	LEFT HANDLE SWITCH ASSY.	1
10	17000001	94061-10000-03	FLANGE U NUT 10MM	8
11	23052511	C2A-68410-00-00	THROTTLE CABLE ASSY.	1
12	23052512	B1A-34136-00-00	SPEEDOMETER BRACKET	1
13	23052513	B2A-34110-00-00	SPEEDOMETER	1
14	15000010	95800-06045-02	FLANGE BOLT 6X45	4
15	23052515	B1A-72311-00-00	HANDLE BAR	1



A10**HANDLE BAR****M250CC**

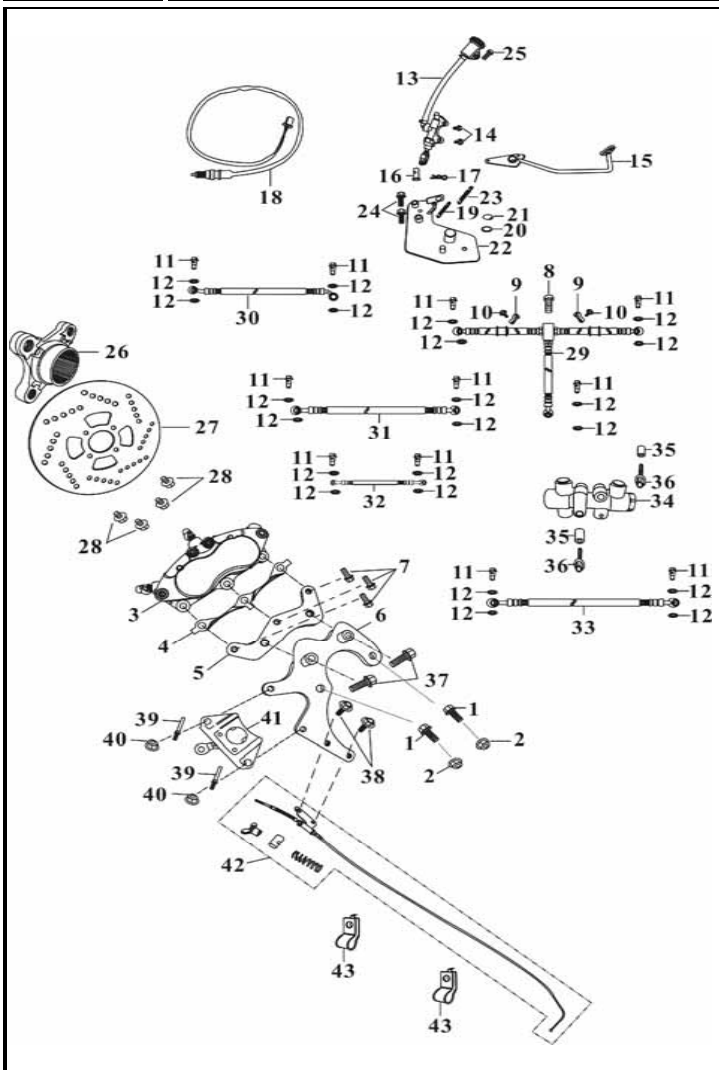
ITEM	UNISON NO.	PARTS NO.	DESCRIPTION	QTY
16	23052516	A5A-37840-00-00	THROTTLE LEVER ASSY.	1
17	23032507	A1A-56010-00-00	MASTER CYLINDER	1
18	23052518	A5D-72500-00-00	REAR VIEW MIRROR SET	1
19	23052519	A5D-72510-00-00	FR. REAR VIEW MIRROR	1
20	23052520	A5D-72520-00-00	FL. REAR VIEW MIRROR	1
21	31032537	A9D-55035-00-00	COLLER	2
22	23052522	A9A-56084-00-00	PARKING BRAKE ASSY.	1



F11

REAR DISK ASSY.

M250CC



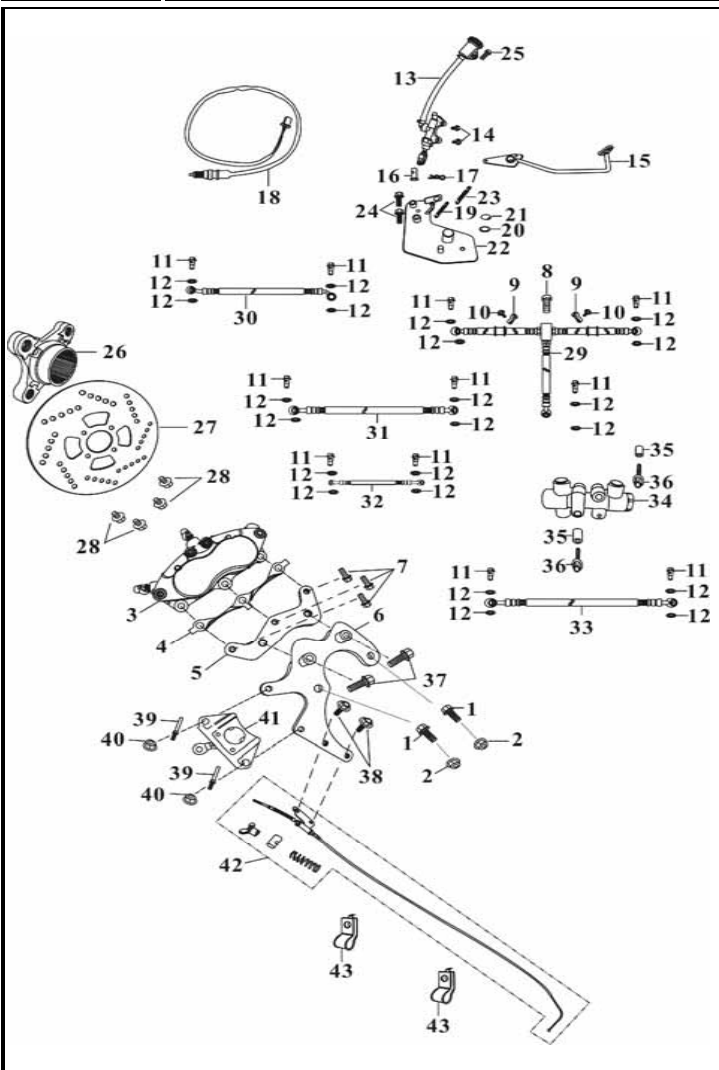
ITEM	UNISON NO.	PARTS NO.	DESCRIPTION	QTY
1	44000013	94060-12000-03	FLANGE NUT 12MM	2
2	31032505	92000-12050-02	BOLT 12X50	2
3	31052503	A9A-56080-00-00	DUEL CALIPER ASSY.	1
4	31052504	A9A-54537-00-00	CHECK WASHER	1
5	31052505	A9A-56082-00-00	CALIPER STAY,2	1
6	31052506	A9A-56081-00-00	CALIPER STAY,1	1
7	14000010	95800-08020-02	FLANGE BOLT 8X20	4
8	39000009	96001-06032-03	FLANGE BOLT 6X32	1
9	31032512	A5A-55365-00-00	HOSE CLAMP	2
10	25000010	95800-06012-04	FLANGE BOLT 6X12	5
11	31032513	A1A-56027-00-10	HOSE BOLT	8
12	31052512	94101-10144-50	PLATE WASHER	22
13	31052513	A9D-56050-00-00	MASTER CYLINDER,2	1
14	44000007	95800-08030-02	FLANGE BOLT 8X30	2
15	31052515	B2D-59610-00-00	BRAKE PEDEL	1



F11

REAR DISK ASSY.

M250CC



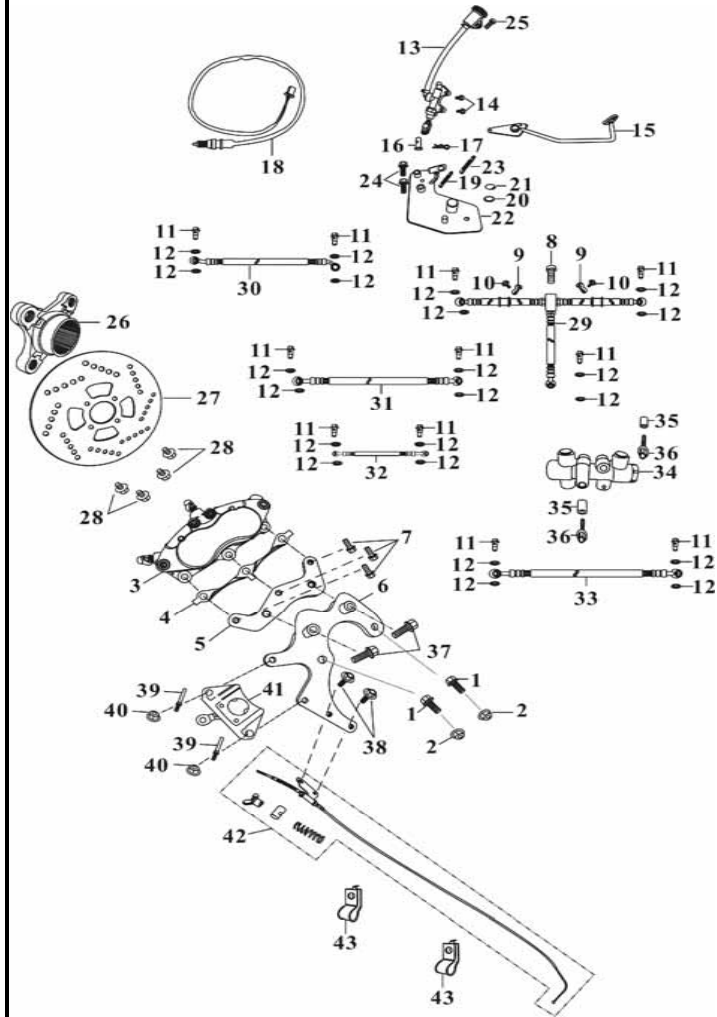
ITEM	UNISON NO.	PARTS NO.	DESCRIPTION	QTY
16	31052516	A4A-58347-00-00	PIN	1
17	44000005	94251-12221-00	SPLIT PIN 1.2X22	2
18	44000019	A3D-59670-00-00	STOP SWITCH ASSY.	1
19	31032521	A5A-59652-00-00	TENSION SPRING,1	1
20	44000009	A5A-59657-00-00	WASHER 19X25X2.0	1
21	04000011	94511-12190-00	CIR CLIP 19MM	2
22	31052522	B2A-56035-00-00	MASTER CYLINDER BRKT	1
23	44000010	A5A-59653-00-10	TENSION SPRING,2	1
24	44000007	95800-08030-02	FLANGE BOLT 8X30	2
25	11000008	96001-06016-01	FLANGE BOLT 6X16	2
26	44000017	A5A-56034-00-00	BRAKE DISC STAY	1
27	31052527	B2A-56033-00-00	BRAKE DISC	1
28	44000016	A5A-56037-00-00	PAN HEAD SOCKET BOLT	4
29	31052529	C2D-56043-00-00	BRAKE HOSE,1	1
30	31052530	C2D-56053-00-00	BRAKE HOSE,2	1



F11

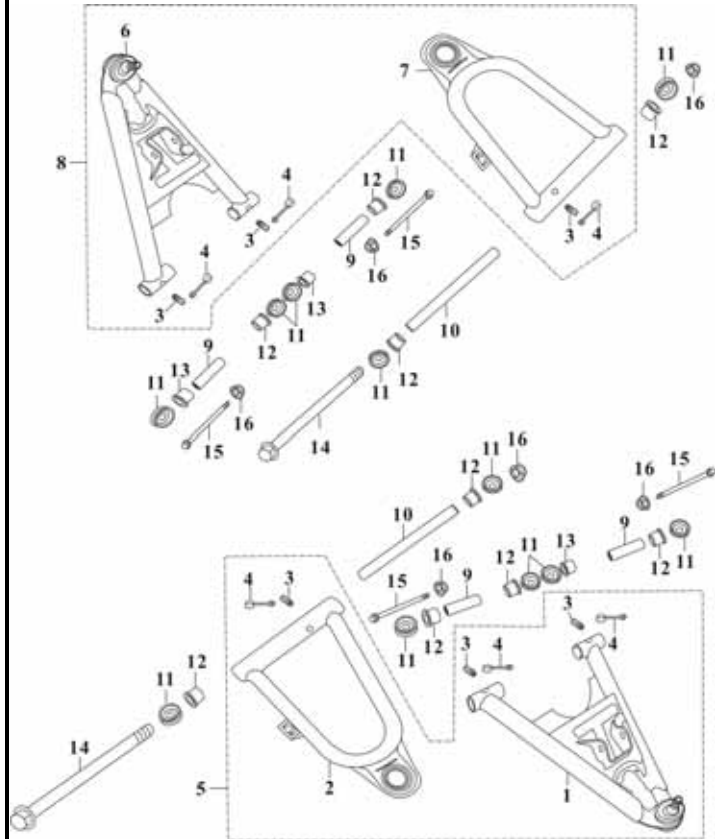
REAR DISK ASSY.

M250CC



ITEM	UNISON NO.	PARTS NO.	DESCRIPTION	QTY
31	31052531	C2D-56063-00-00	BRAKE HOSE,3	1
32	31052532	C2D-56073-00-00	BRAKE HOSE,4	1
33	31052533	B2D-56083-00-00	BRAKE HOSE,5	1
34	31032536	A9D-55030-00-00	DIVERSION VALVE	1
35	31032537	A9D-55035-00-00	COLLER	2
36	07000015	96001-06065-02	FLANGE BOLT 6X65	2
37	14052507	95701-10025-02	FLANGE BOLT 10X25	2
38	29000003	95800-08012-02	FLANGE BOLT 8X12	4
39	44000002	A1A-56029-00-00	CALIPER STAY BOLT	2
40	14000020	94051-08000-03	FLANGE NUT 8MM	6
41	31052541	A9A-56090-00-00	CALIPER ASSY.	1
42	31052542	A9A-68251-00-00	BRAKE CABLE ASSY.	1
43	31000007	A1A-56044-00-00	BRAKE HOSE HOLDER	2



F12**SWING ARM / FOOTREST / FEND BAR****M250CC**

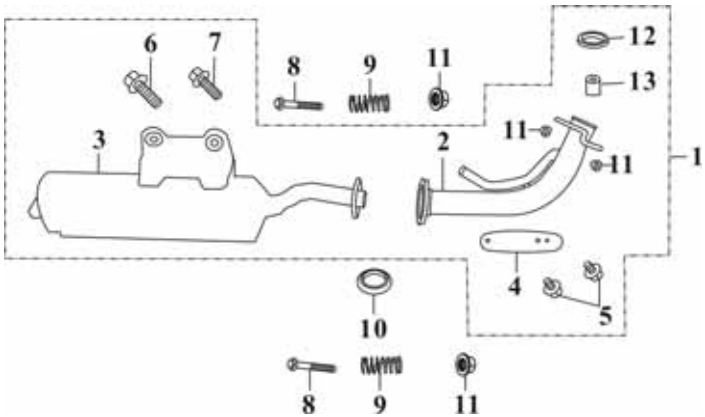
ITEM	UNISON NO.	PARTS NO.	DESCRIPTION	QTY
1	25052501	B2A-57411-00-00	FRONT SWING ARM,1	1
2	25032502	A9A-57412-00-00	LEFT UP SWING ARM	1
3	25000011	A1A-57367-00-00	GREASE VALVE	6
4	25032504	A4A-57368-00-00	GREASE VALVE CAP	6
5	25052505	B2A-57410-00-00	FRONT SWING ARM ASSY.,1	1
6	25052506	B2A-57421-00-00	FRONT SWING ARM,2	1
7	25032507	A9A-57422-00-00	RIGHT UP SWING ARM	1
8	25052508	B2A-57420-00-00	FRONT SWING ARM ASSY.,2	1
9	25000012	A4A-57427-00-00	DISTANCE COLLAR,1	4
10	25000018	A4A-57428-00-00	DISTANCE COLLAR,2	2
11	25000019	A4A-57419-00-00	DUST SEAL COVER	12
12	25000020	A4A-57447-00-00	BUSH,1	8
13	25000021	A4A-57448-00-00	BUSH,2	4
14	14000034	A4A-53511-00-00	FLANGE BOLT 10X198	2
15	25000025	95800-10080-03	FLANGE BOLT 10X80	4
16	17000001	94061-10000-03	FLANGE U NUT 10MM	8



F13

MUFFLER ASSY

M250CC



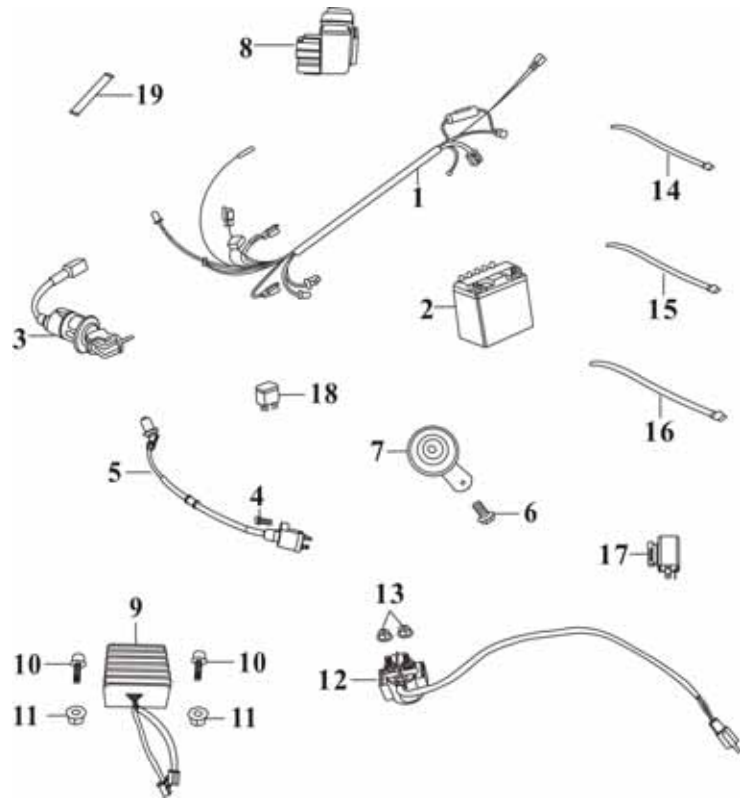
ITEM	UNISON NO.	PARTS NO.	DESCRIPTION	QTY
1	26052501	B2D-28200-00-00	EXHAUST PIPE ASSY.	1
2	26052502	B2D-28220-00-00	EXHAUST PIPE	1
3	26052503	B2D-28230-00-00	MUFFLER	1
4	26052504	A9A-28111-00-00	EXHAUST PIPE PROTECTOR,1	1
5	26032505	93891-06007-03	PAN HEAD W/S 6X7	2
6	26052506	95802-08045-02	FLANGE BOLT 8X45	1
7	26000014	95802-08032-02	FLANGE BOLT 8X32	2
8	26032506	A9A-28116-00-00	EXHAUSE PIPE FLANGE BOLT (RG 250)	2
9	26052509	A9A-28136-00-00	EXHAUSE PIPE SPRING (RG 250)	2
10	43002524	A9A-28131-00-00	EXHAUST PIPE GASKET	1
11	14000020	94051-08000-03	FLANGE NUT 8MM	6
12	26052512	SEA-18292-00	EXHAUST PIPE GASKET	1
13	26052513	C2A-28227-00-00	COLLAR 15X8.5X15L	1



F14

ELECTRICAL PARTS

M250CC



ITEM	UNISON NO.	PARTS NO.	DESCRIPTION	QTY
1	27052501	B2A-33610-00-00	WIRE HARNESS ASSY.	1
2	27052502	B2A-33410-00-00	BATTERY 12A	1
3	27052503	A9D-66210-00-00	MAIN SWITCH ASSY.	1
4	27000029	93500-05022-02	PAN HEAD SCREW 5X22	1
5	27052505	UCA-30510-00	IGNITION COIL ASSY.	1
6	27052506	95800-06014-04	PAN HEAD SCREW 8X14	1
7	27052507	B2A-38210-00-00	HORN	1
8	43002514	SE1-30400-00	CDI	1
9	27052509	SEA-31600-00	REGULATOR/RECTIFIER	1
10	40000003	96001-06040-02	FLANGE BOLT 6X40	6
11	26000020	94050-06000-01	FLANGE NUT 6MM	2
12	27000045	M4A-38310-00-00	STARTER RELAY ASSY.	1
13	26000020	94050-06000-01	FLANGE NUT 6MM	2
14	27000039	94402-02502-01	BAND 250	10
15	27000002	94404-03001-01	BAND 300MM	1

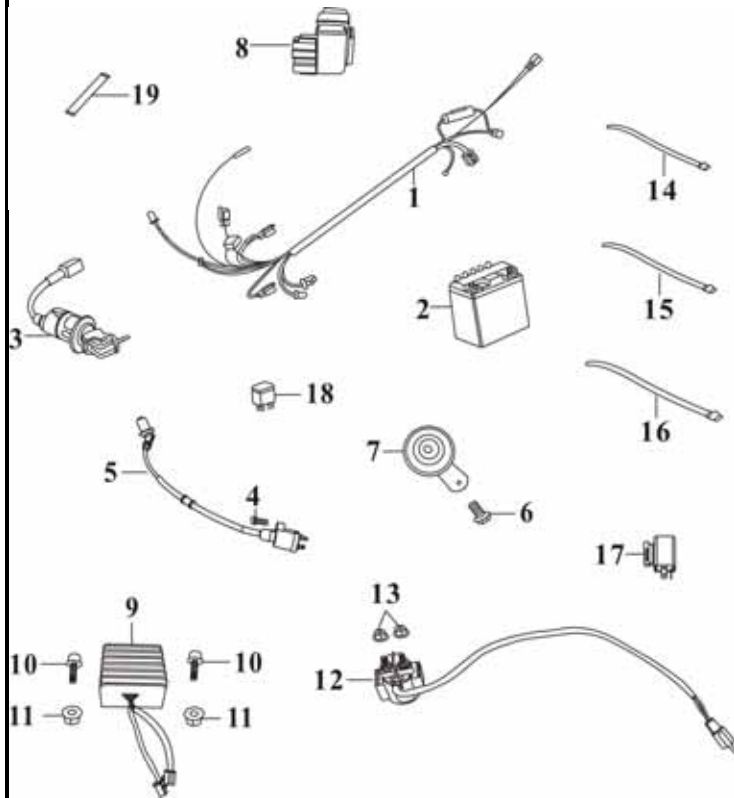


F14

ELECTRICAL PARTS

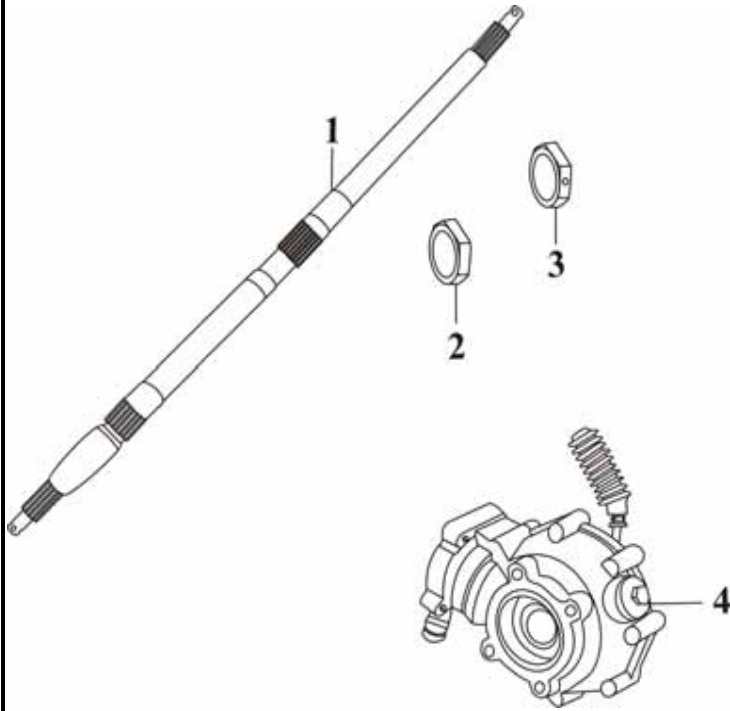
M250CC

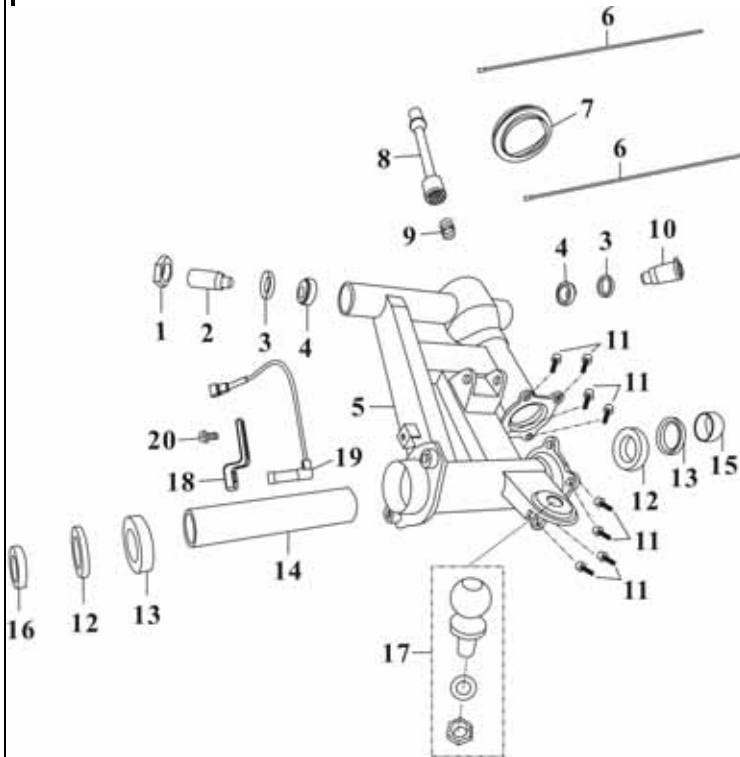
ITEM	UNISON NO.	PARTS NO.	DESCRIPTION	QTY
16	27052516	94403-06101-00	BAND 610MM	1
17	27052517	A3D-38110-00-00	FLASHER RELAY.	1
18	27000008	M1A-38310-00-00	STARTER RELAY	1
19	27052519	B2A-33437-00-00	BAND HOLDER	1



F15**REAR WHEEL AXLE****M250CC**

ITEM	UNISON NO.	PARTS NO.	DESCRIPTION	QTY
1	28052501	B2A-54511-00-00	REAR WHEEL AXLE	1
2	28000016	A4A-54524-00-10	HEX NUT M33	1
3	28032513	A4A-54524-00-01	HEX. NUT M33	1
4	28052504	M9C-29080-00-00	REAR GEAR BOX	1



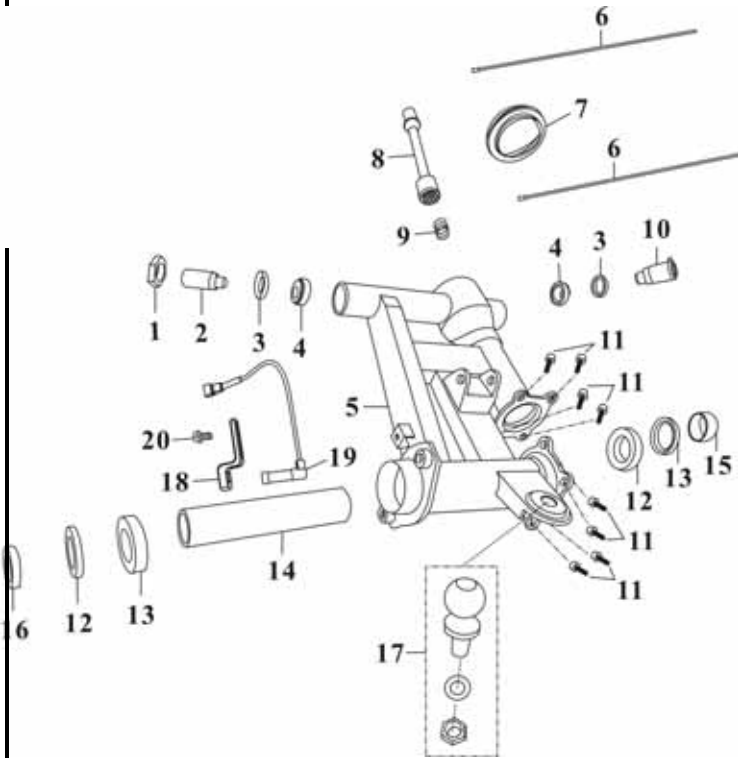
F16**REAR SWING ARM****M250CC**

ITEM	UNISON NO.	PARTS NO.	DESCRIPTION	QTY
1	25052501	B2A-58164-00-00	NUT	1
2	25052502	B2A-58162-00-00	REAR ADJUST BOLT	1
3	25052503	91201-26040-60	OIL SEAL	2
4	25052504	96140-30203-00	BEARING	2
5	25052505	B2A-58110-00-00	REAR FORK	1
6	25052506	M9C-29074-00-	CLAMP	2
7	25052507	M9C-29073-00-	BOOT	1
8	25052508	M9C-29077-00-	DRIVE SHAFT	1
9	25052509	M9C-29078-00-	SPRING	1
10	25052510	B2A-58163-00-00	REAR ABJUST BOLT	1
11	31032506	95701-10025-0A	FLANGE BOLT 10X25	8
12	44000021	96120-06007-20	BALL BEARING 6007Z	2
13	44000020	91201-42062-08	OIL SEAL 42X62X08	2
14	25052514	B2A-54522-00-00	SPACER TUBE	1
15	25052516	B2A-54523-00-00	COLLAR	1



F16**REAR SWING ARM****M250CC**

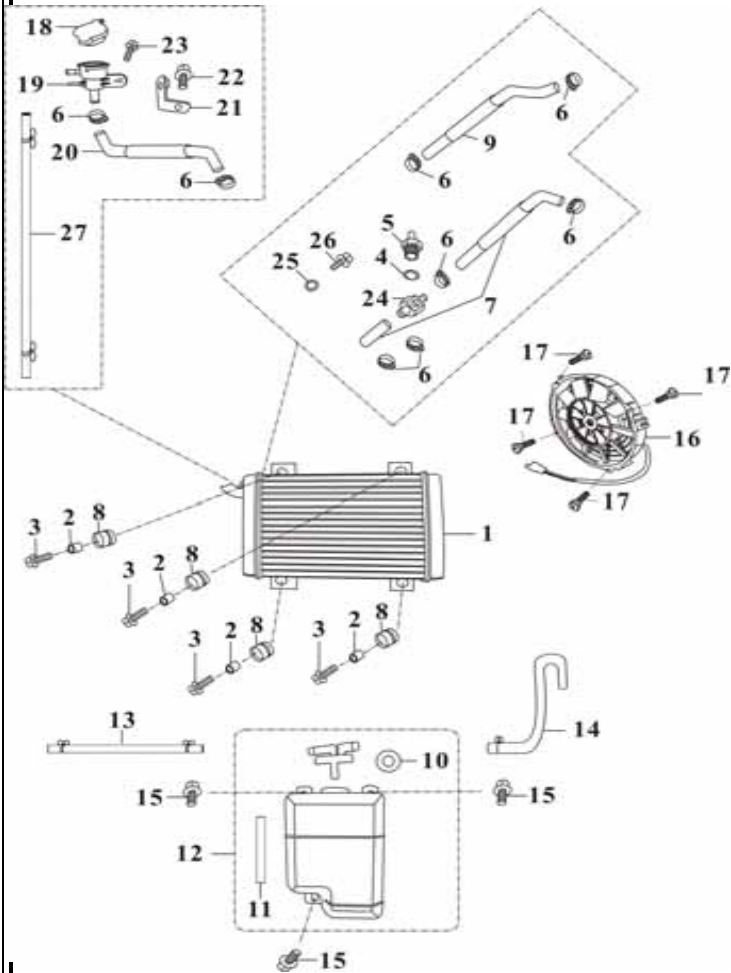
ITEM	UNISON NO.	PARTS NO.	DESCRIPTION	QTY
16	28000019	A5A-54523-00-00	COLLAR	1
17	25052517	A5A-75120-00-00	SPHERICAL BOLT ASSY.	1
18	25052518	A4A-34127-00-00	S TYPE SENSOR STAY	1
19	25052519	A4A-34116-00-00	METER SENSOR	1
20	14000016	95800-08014-02	FLANGE BOLT 8X14	14



F17

RADIATOR & THERMOSTAT ASSY.

M250CC



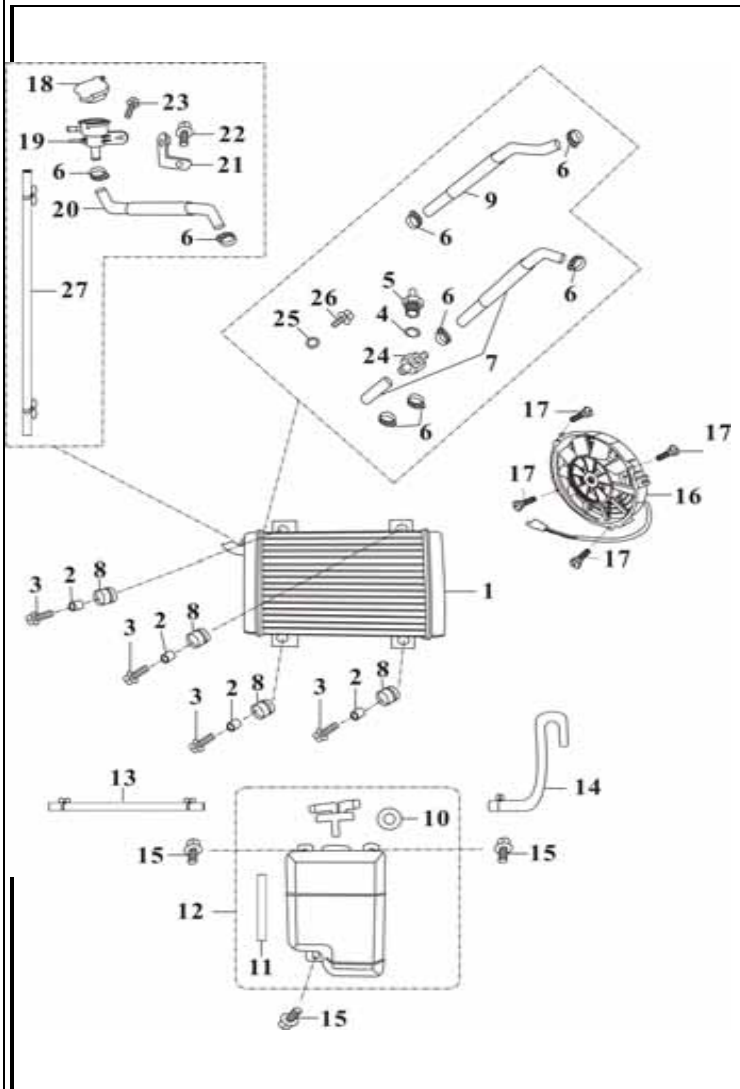
ITEM	UNISON NO.	PARTS NO.	DESCRIPTION	QTY
1	47052501	M9C-16511-00-01	RADIATOR	1
2	27000021	M5A-16567-00-10	COLLER	3
3	26000013	95800-06025-02	FLANGE BOLT 6X25	4
4	47052504	91305-35140-00	O-RING14X3.5	1
5	47052505	SEA-37760-00	TERMINAL SWITCH	1
6	47052506	M9C-16534-00-00	CLAMP (M-1 25MM)	8
7	47052507	M9C-16533-00-00	HOSE,2	1
8	14000044	A1A-52158-00-00	DAMPER,3	7
9	47052509	M9C-16533-00-01	HOSE,2	1
10	47052510	M9C-16725-00-00	WATER TANK PACKING	1
11	47052511	M9C-16733-00-00	SEC.WATER TANK HOSE,2	1
12	47052512	M9C-16710-00-00	SEC.WATER TANK	1
13	47052513	M9C-16732-00-00	SEC.WATER TANK HOSE,1	1
14	47052514	M9C-16731-00-00	SEC.WATER TANK VENTILATOR	1
15	15000008	93404-06020-03	BOLT W/ WASHER 6X20	6



F17

RADIATOR & THERMOSTAT ASSY.

M250CC



ITEM	UNISON NO.	PARTS NO.	DESCRIPTION	QTY
16	47052516	M9C-16610-00-01	ELECTRIC FAN (8")	1
17	07000025	93500-05010-02	PAN HEAD SCREW 5X10	4
18	47052518	M9C-16522-00-00	RADIATOR COVER	1
19	47052519	M9C-16523-00-00	RADIATOR COVER STAY	1
20	47052520	M9C-16524-00-00	RADIATOR COVER STAY HOSE	1
21	47052521	M9C-16527-00-00	RADIATOR COVER BRACKET	1
22	25000010	95800-06012-04	FLANGE BOLT 6X12	5
23	16000013	93404-06016-0A	BOLT W/ WASHER 6X16	3
24	47052524	M9C-16536-00-00	THREE WAT JOINT	1
25	47052525	M9C-16525-00-00	TERMINAL SWITCH PACKING ψ 14x ψ 22x1T	1
26	47052526	95800-14015-01	FLANGE BOLT 14X15	1
27	47052527	M9C-16801-00-00	HOT WATER HOSE,1	1



